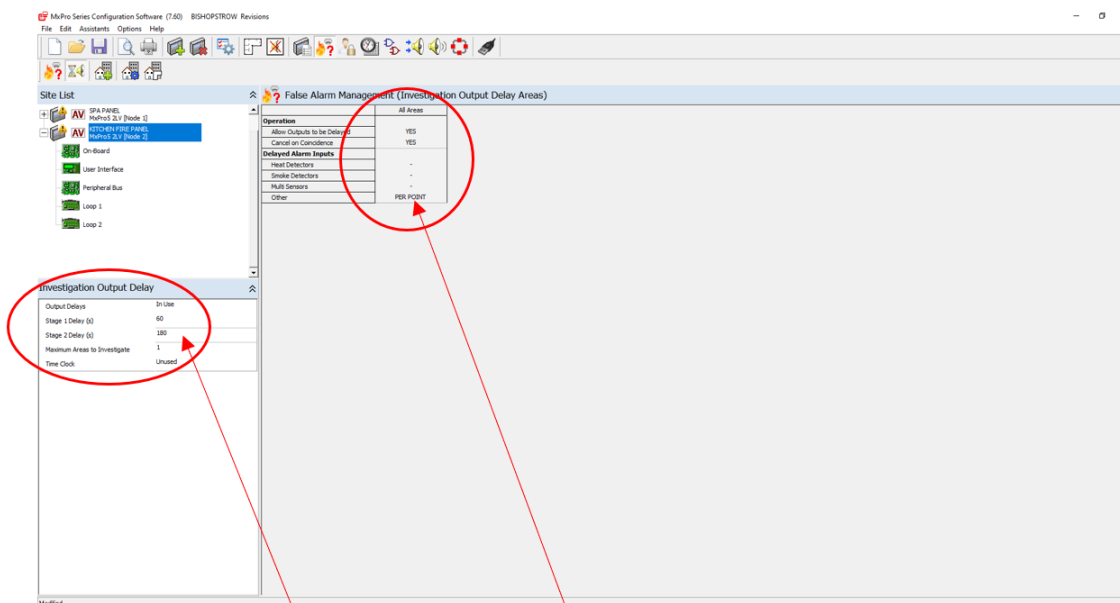
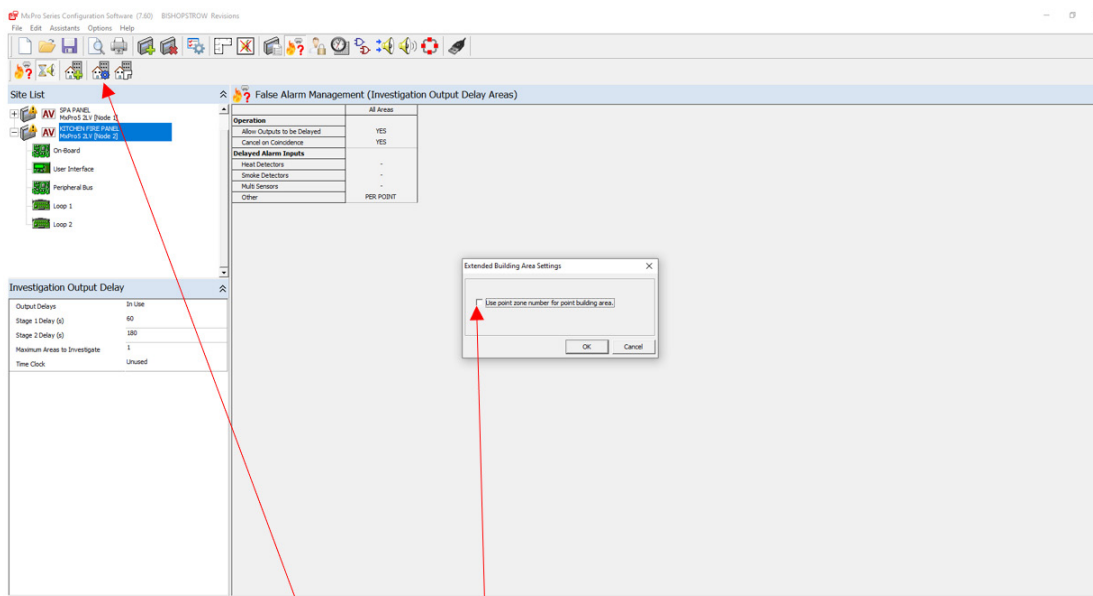


SETTING UP AN INVESTIGATION DELAY ON AN INPUT

False Alarm Management



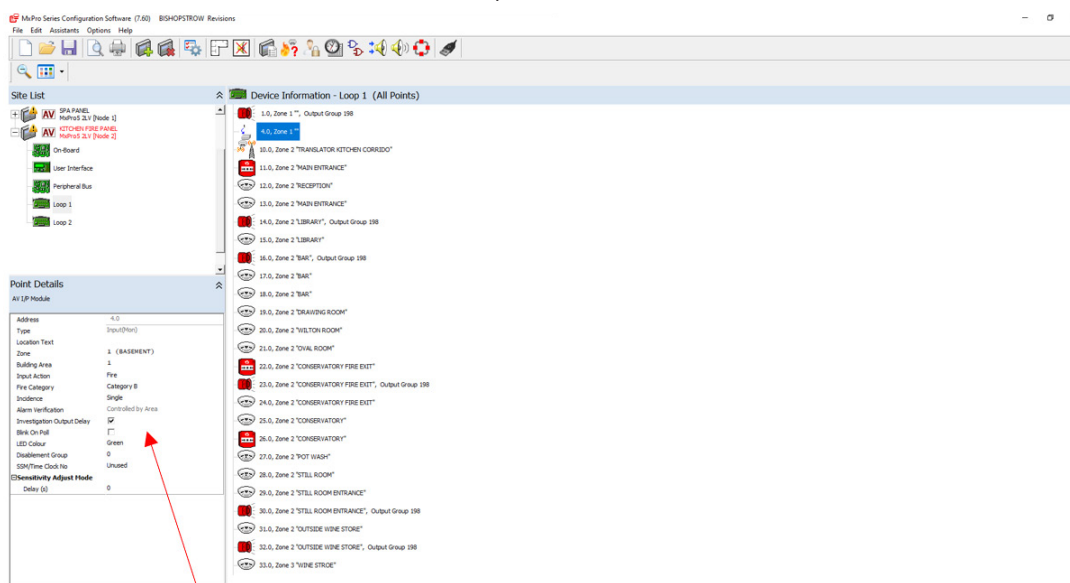
Select the detector setting to '-' and the other to 'per point'
Set the investigation delay times in seconds.



Click on the house with the blue cog. Untick the box.

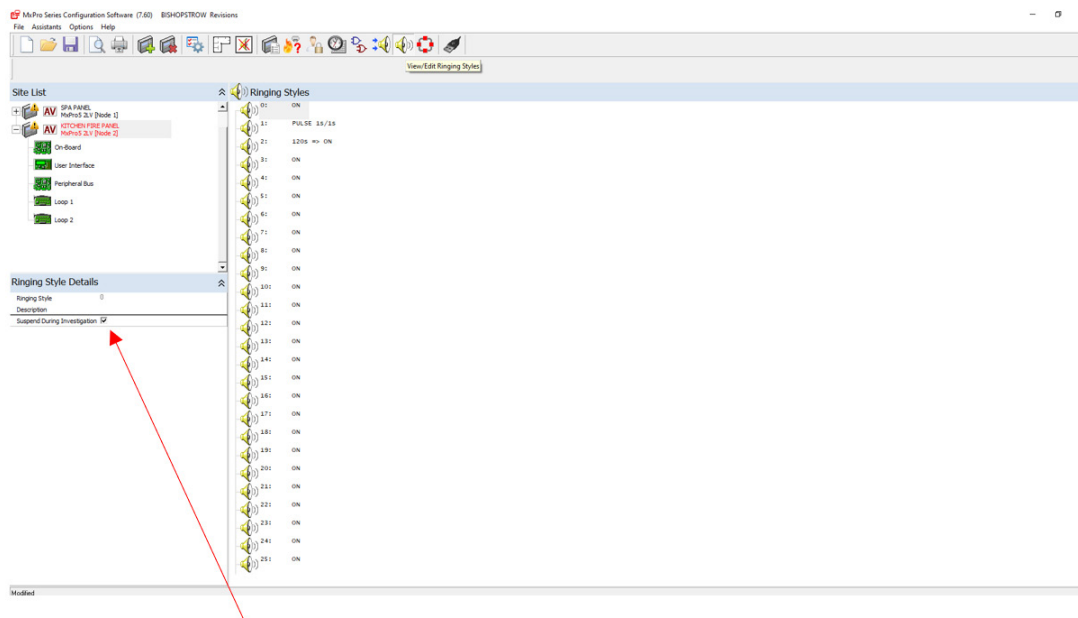
SETTING UP AN INVESTIGATION DELAY ON AN INPUT

Point details of the I/P (address 4 in this example)



Select the point details as shown.

Ringling Styles



Make sure the 'suspend during investigation' is selected.

Upload the config to the panel – go to level 2 menu to enable the delay.