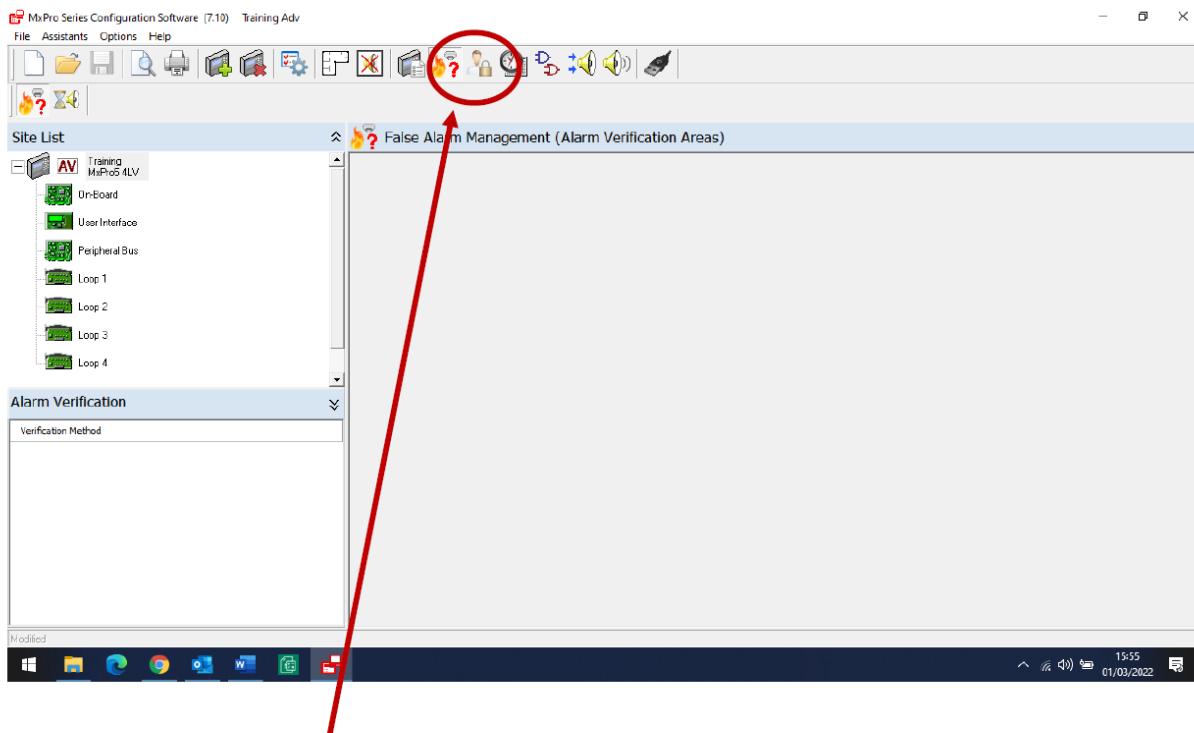
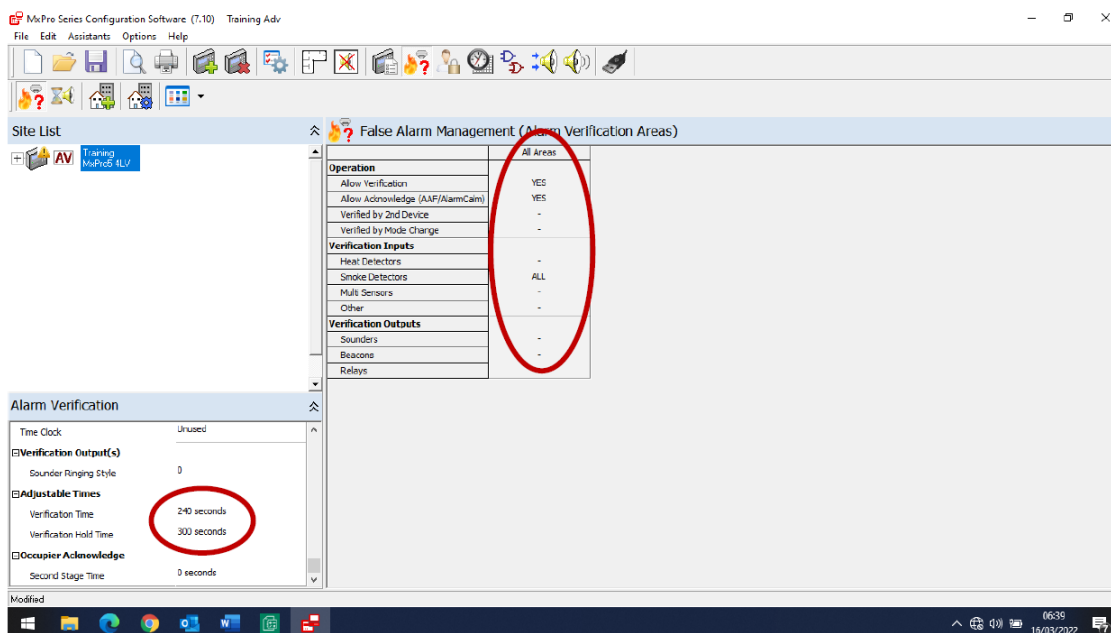


FALSE ALARM MANAGEMENT - ADVANCED PANELS



Select the False Alarm Management icon, under alarm Verification the method is not selected.



Select type 'B' method – the verification time will be defaulted to 240 seconds and all the smoke detectors are added by default.

If Heats and Multi's need to be added, change the '-' to 'ALL' using the drop-down menu. Under Verification Outputs, change the ALL to '-' on the sounders and beacons

All devices will now have a verification time of 240 secs – i.e., the fire condition will need to be persistent for this duration.