

sygn^o-fi

By Eurotech

Next Generation
Wireless Fire Alarm Systems



SECURITY & FIRE
EXCELLENCE AWARDS
2022 WINNER

eurotech[®]
FIRE SYSTEMS LIMITED

Our customers are already seeing the benefits of using our Sygno-fi range. The exceptional performance of these devices, ease and convenience of installation and the fact they're open protocol has made a remarkable difference to their client's fire safety systems.

Michelle Agius
Eurotech's Managing Director



High-performance wireless detection

This new range of high-performance open protocol EN54-25 wireless detection, control and alarm devices offer exceptional capabilities, quality and reliability. Combined with user-friendly survey, install, commissioning and maintenance software, the Sygno-fi range revolutionises the wireless fire systems market.

The Sygno-fi wireless platform is suitable for both small-medium or large sites, with the capability to handle up to 128 devices per wireless translator and 240 per hybrid loop, along with a 10-year battery life on sensors, call points and inputs and five years on output devices, sounders and VADs.

Compatible Panels

Toccare Touch Screen Panel	700-100
Toccare Lite Half Loop Panel	700-100L
Toccare Mini Panel	700-101
Advanced Go Single Loop Control Panel	GO1V
Advanced Go+ Single Loop Control Panel	GO1VPLUS
Esprit 1-2 loop Control Panel	ESA-1001
Esprit 1-4 loop Control Panel	ESA-1002
Eurotech 1 Loop Intelligent Control Panel	EUR-5100N
Eurotech 2 Loop Intelligent Control Panel	EUR-5200N
Evotech AS Intelligent Control Panel	600-100
Evotech AS Lite Intelligent Control Panel	600-101
Evotech AS 1 Loop Addressable Control Panel	600-102S / 600-103S
Advanced MxPro5 1 Loop Fire Panel	MX-5100
Advanced MxPro5 2 Loop Fire Panel	MX-5200
Advanced MxPro5 4 Loop Fire Panel	MX-5400
Advanced MxPro5 8 Loop Fire Panel	MX-5800

EN 54-25



Powerful. Reliable. Easy to use.

This incredibly powerful and easy to configure EN54-25 wireless fire alarm system is packed full of features making it one of the safest solutions on the market.

Open Protocol

The Sygno-fi range is open protocol, so it is easily integrated with most addressable fire alarm panels giving you complete flexibility and choice.

Network Optimiser

Sygno-fi devices use 60 channels to ensure interference and channel collisions are avoided. It also checks and confirms that every packet of data is sent and received as expected.

SafePath

Redundant communication paths between expanders are automatically identified. If any Expander module in the chain fails, the path finds a new route, ensuring communication continuity.

SafeSwitch

The system is built with dual channel communication between devices. If one channel is blocked, the other automatically takes over so that every message is delivered.

Pathfinder Technology

With a point to point transmission range over 1km and an antenna tuned for performance across frequencies and environments, Sygno-fi protects large buildings with ease.

Power Management

A synchronised clock among the field and infrastructure devices with a communication slot to transmit and receive messages helps optimise battery life.

Hybrid Technology

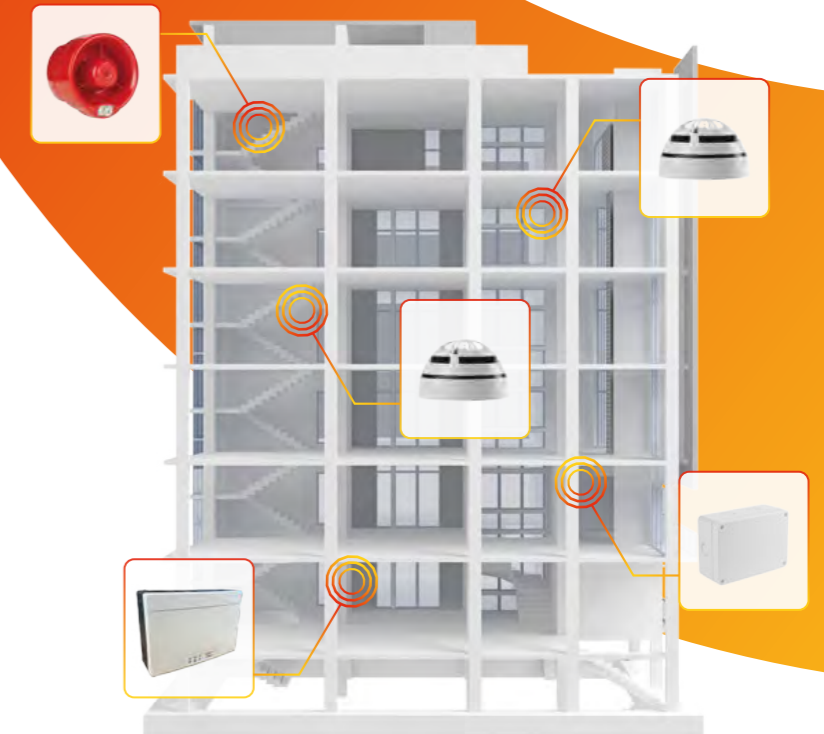
The Sygno-fi range is compatible with hybrid systems, allowing both hardwired and wireless devices to work seamlessly. Each hybrid loop can take up to 240 devices.

10 Year Battery Life

Sygno-fi systems come with a 10-year battery life on sensors, call points and inputs and up to five years on output devices, sounders and VADs.





EN54-25 Certified

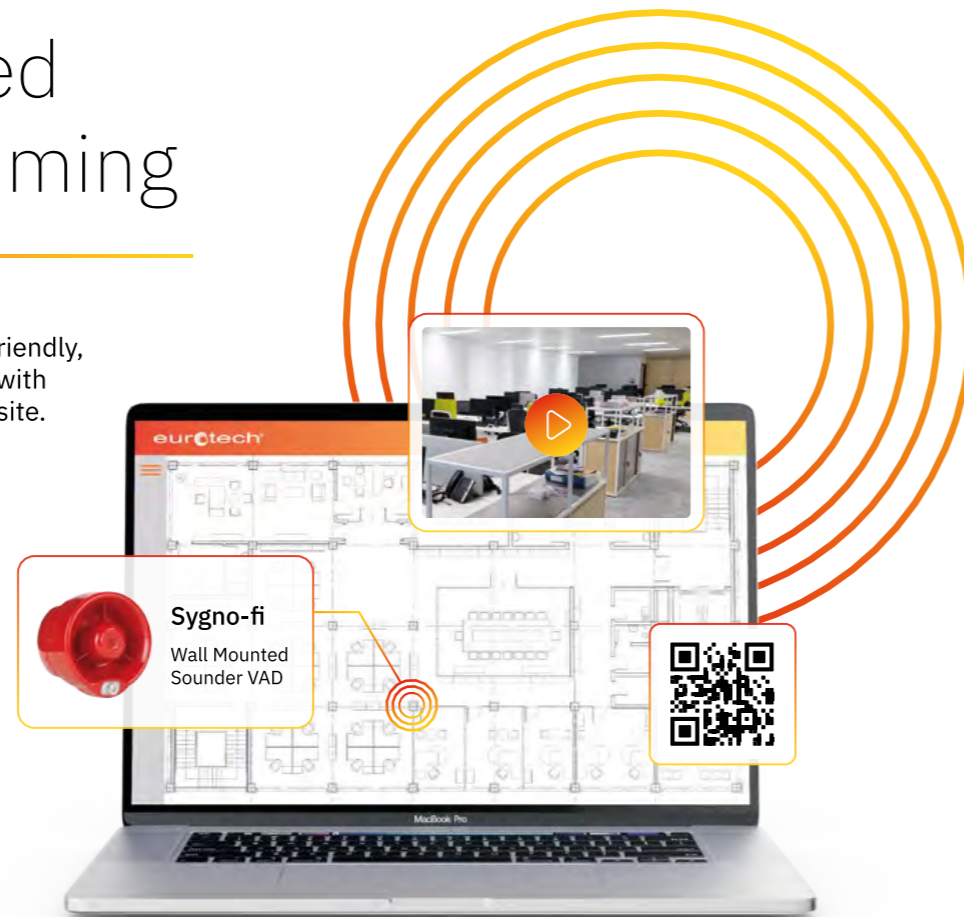
All the devices in the Sygno-fi range are EN54-25 Certified in line with the European product standard for wireless fire alarms.



SygNEX advanced system programming

Our bespoke software is designed to be user-friendly, allowing each Sygno-fi system to be specified with ease for the differing needs of each individual site.

-  **Product QR code** scan with PC camera for easy product import into the system.
-  **Drag&Drop** devices on floor plans for simple setup
-  **ConfigWizard** button to auto-learn all your devices onto the system
-  **LiveDisplay** provides access to a real time visual display of the system status for fast control.



Site Survey App

Surveying just got a lot easier thanks to our free app. Available on all Android devices.

Download from the Google Play Store.



Sygno-fi by Eurotech product range

Sygno-fi Heat Detector

The latest in wireless heat detector technology and is configurable for rate of rise or high temperature operation. The fully intelligent device is designed to give the best warning of a fire where smoke detection technology is not suitable.



Sygno-fi Multi-Sensor Detector

This fully intelligent device combines both dual optical smoke and heat detection technologies for improved performance, whilst maintaining high levels of unwanted alarm rejection.



Sygno-fi Optical Detector

The detector utilises dual optical smoke detection technologies and algorithms for improved performance, maintaining the highest levels of false alarm rejection.



Sygno-fi Manual Call Point

This fully intelligent device is compatible with all Sygno-fi translator and expander modules. The unit has a resettable plastic element which displays a drop down warning indicator. Weatherproof enclosure also available.





Eurotech Sygno-fi Sounder Base

This wireless sounder base can be used as stand-alone notification device (with a blanking cap) or as a combined detection and alarm device. The unit has as standard 32+32 recognised sounder tones and 4 levels of volume adjustment.



Eurotech Sygno-fi Sounder VAD Base

This sounder with VAD base (red or white flash) is a high performance device, incorporating an EN54-23 compliant VAD used to alert people in the event of a fire. Each unit has an integral moulded base for mounting an wireless detector or a sounder cover if a detector is not required.



Eurotech Sygno-fi Wall Sounder

The Sygno-fi Wall Sounder is a EN 54-3 (Type B) compliant acoustic device, equipped with 3 levels of volume adjustment and 32 recognised tones which can be set via the control equipment or locally at the sounder. Red and white housing options are available.



Eurotech Sygno-fi Wall Sounder VAD

This Sounder VAD is a EN 54-3 (Type B) and EN 54-23 compliant visual/alarm device is equipped with 3 levels of volume adjustment, high output LED beacon, and 32 recognised tones which can be set via the control equipment or locally at the sounder. Red and white housing options are available.



Sygno-fi Remote Indicator

The SYG-RI Sygno-fi Wireless Remote Indicator is a programmable output device which can be operated by the control panel in the event of fire, alarm or fault conditions from selected devices.



Eurotech Sygno-fi Input Module

The SYG-IM Sygno-fi Input Module has a single fully monitored input circuit which allows simple integration of third party equipment with the fire system.



Eurotech Sygno-fi Output Module

This Output Module has been designed to allow easy control of a variety of third party equipment including access control doors, ventilation plant and fire extinguishing systems. The unit is powered entirely from its internal battery supply. Mains rated version available.



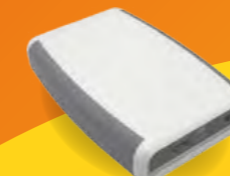
Eurotech Sygno-fi Translator Module

The SYG-W2W Sygno-fi Translator Module is the core component of the Sygno-fi intelligent hybrid fire detection and alarm system. When connected on to a compatible loop, the unit is capable of linking up to 128* fully intelligent wireless field devices with the fire alarm system. (*when associated with at least 3 x Sygno-fi Expander Modules.).



Eurotech Sygno-fi Expander Module

The unit provides a convenient method to increase radio communication range beyond that possible from a single translator by relaying the radio communication to further expanders or directly to the wireless field devices, allowing to build large fully wireless systems or add wireless devices onto areas where cabling for translators is difficult or impossible.



Eurotech Sygno-fi Wireless Dongle

The SYG-DD dongle device allows the user to wirelessly connect the PC to the translator for system management purposes (commissioning, debugging and diagnostic). Compact and easily portable, the device is powered by USB cable once connected to the pc or by the two onboard batteries.

We're here to help

Here at Eurotech, we take pride in our post-sales support, technical service provision and reliability when it comes to helping you with your client's fire system needs. We only provide the best, most robust fire safety systems and the Sygno-fi range encompasses those values.



Download Sygno-fi
Consultant Specification

Speak to our experts
+44 (0) 203 141 0999

Because It Matters®



The eurotech® Advantage

As a Eurotech Advantage
Partner you will benefit from:

- ✓ Free lifetime equipment warranty
- ✓ Free wireless programming
- ✓ Free site surveying
- ✓ Free site support allowance
- ✓ Free panel branding options
- ✓ Joint marketing and promotions
- ✓ Special periodic offers on equipment
- ✓ Preferential pricing on delivery and returns
- ✓ Preferential access to:
Design support, panel programming and commissioning, drawing and schematics

Port Lympne Safari Park

Hythe, Kent

Objective

To install a complete fire life safety solution across all buildings and structures in the park to provide both protection to staff and visitors, and protect the animals in close proximity to accommodation.



System Installed

Sygnof-i by Eurotech wireless fire system with Advanced MxPro fire control panels installed across the park buildings including the hotel, staff offices and accommodation, restaurants, keeper's lodges, and visitor accommodation including animal enclosure rooms, glamping lodges, forest hideaways and shepherd huts.



Scena Way Apartment Blocks

London, SE5

Objective

To install a fire detection and alarm system as per the requirements of BS5839-1 L5/NFCC V4, to protect from the risk of fire arising from cladding on the external wall system, and initiate a simultaneous evacuation strategy.



System Installed

Sygnof-i by Eurotech wireless fire system with Eurotech 4 loop fire control panels installed across the four apartment complexes. The entire installation comprised 8 fire control panels with 1173 Sygnof-i by Eurotech wireless detectors, sounders and alarm devices in communal building areas and 163 private apartments.



SECURITY & FIRE EXCELLENCE AWARDS 2022 WINNER

Hardware Product Innovation of the Year 2022

In November 2022 our Sygno-fi by Eurotech range won the prestigious Security & Fire Excellence Award for Hardware Product Innovation of the Year. These prestigious industry awards recognise and celebrate the very best in the fire and security industry.



sygn  **-fi** By Eurotech

**SECURITY & FIRE
EXCELLENCE AWARDS**
2022 WINNER

enquiry@eurotechfire.com

+44 (0) 203 141 0999

eurotechfire.com

Eurotech Fire Systems Limited

18-20 Stratfield Park
Elettra Avenue
Waterlooville
Hampshire
PO7 7XN
United Kingdom



Fire Industry Association
Leading Excellence in Fire Since 1916



Assessed to ISO 9001
Cert/LPCB ref .1213