

# eurotech<sup>®</sup>

FIRE SYSTEMS LIMITED

---



# PRODUCT CATALOGUE

VERSION 1.2

# CONTENTS

## Wireless Fire Alarm Systems

Sygnof-i	2
Euro-fi	8

## Intelligent Fire Control Panels

Toccare	12
Ampac	14
Eurotech	15
Advanced	16
C-Tec	18
Evotech	19
Kentec	20
Haes	21

## Twin Wire Fire Control Panels

C-Tec	23
Infinity ID2	24
Kentec	24

## Conventional Fire Control Panels

Eurotech	26
C-Tec	26
Haes	27
Kentec	28

## Intelligent Fire Devices

Odyssey	30
Eurotech	33
Apollo Soteria	37
Apollo XP95	38
Apollo Discovery	40
Apollo XP95 I.S.	42
Hochiki	44
Nittan	47
Infinity ID2	49

## Conventional Fire Devices

Odyssey	52
Alarmsense	53
Orbis	54
Orbis Marine	56
Apollo Series 65	58
Eurotech	59
Hochiki	61
Nittan	62
Vimpex	63

## Specialist Fire

Euro-VAC	66
Wagner	68
Cavius	75
PA/VA	76

## Non-Fire Products

C-Tec Quantec Emergency Call	78
------------------------------	----

## Testing Equipment

Detector Testers	81
------------------	----

## System Accessories

Batteries	88
Power Supplies	88



Located near Portsmouth, Eurotech Fire Systems Ltd is a leading fire systems solutions provider for the UK and international markets.

Passionate about offering the right fire detection system for the customer's requirements, compliance with fire safety regulations is one of our key values.

Providing a unique comprehensive support service and offering a complete selection of fire systems to suit all requirements, we pride ourselves on our exceptional levels of customer service and support.

**Because It Matters®**

# Wireless Fire Systems

---



# WIRELESS FIRE SYSTEMS

## sygno-fi<sup>®</sup>

by Eurotech



**SECURITY & FIRE  
EXCELLENCE AWARDS**  
2022 WINNER  
HARDWARE PRODUCT INNOVATION OF THE YEAR

This new range of high-performance open protocol EN54-25 wireless detection, control and alarm devices offer exceptional capabilities, quality and reliability.

Combined with user-friendly survey, install, commissioning and maintenance software, the Sygno-fi range revolutionises the wireless fire systems market.

### Open Protocol

The Sygno-fi range is open protocol, so it is easily integrated with most addressable fire alarm panels giving you complete flexibility and choice.

### Network Optimiser

Sygno-fi devices use 60 channels to ensure interference and channel collisions are avoided. It also checks and confirms that every packet of data is sent and received as expected.

### SafePath

Redundant communication paths between expanders are automatically identified. If any Expander module in the chain fails, the path finds a new route, ensuring communication continuity.

### SafeSwitch

The system is built with dual channel communication between devices. If one channel is blocked, the other automatically takes over so that every message is delivered.

### Pathfinder Technology

With a point to point transmission range over 1km and an antenna tuned for performance across frequencies and environments, Sygno-fi protects large buildings with ease.

### Power Management

A synchronised clock among the field and infrastructure devices with a communication slot to transmit and receive messages helps optimise battery life.

### Hybrid Technology

The Sygno-fi range is compatible with hybrid systems, allowing both hardwired and wireless devices to work seamlessly. Each hybrid loop can take up to 240 devices.

### 10 Year Battery Life

Sygno-fi systems come with a 10 year battery life on sensors, call points and inputs and up to five years on output devices, sounders and VADs.

### EN54-25 Certified

All the devices in the Sygno-fi range are EN54-25 Certified in line with the European product standard for wireless fire alarms.

# WIRELESS FIRE SYSTEMS



## Sygno-fi Wireless Heat Detector SYG-TA

The latest in wireless heat detector technology and is configurable for rate of rise or high temperature operation. The fully intelligent device is designed to give the best warning of a fire where smoke detection technology is not suitable.



## Sygno-fi Wireless Multi-Sensor Detector SYG-MA

This fully intelligent device combines both dual optical smoke and heat detection technologies for improved performance, whilst maintaining high levels of unwanted alarm rejection.



## Sygno-fi Wireless Optical Detector SYG-PA

The detector utilises dual optical smoke detection technologies and algorithms for improved performance, maintaining the highest levels of false alarm rejection.



## Sygno-fi Wireless Manual Call Point SYG-CP

This fully intelligent device is compatible with all Sygno-fi translator and expander modules. The unit has a resettable plastic element which displays a drop down warning indicator. Weatherproof enclosure also available.



## Sygno-fi Wireless Sounder Base SYG-BS

This wireless sounder base can be used as stand-alone notification device (with a blanking cap) or as a combined detection and alarm device. The unit has as standard 32+32 recognised sounder tones and 4 levels of volume adjustment.



## Sygno-fi Wireless Sounder VAD Base SYG-BSB-23W

This sounder with VAD base (red or white flash) is a high performance device, incorporating an EN54-23 compliant VAD used to alert people in the event of a fire. Each unit has an integral moulded base for mounting an wireless detector or a sounder cover if a detector is not required.



## Sygno-fi Wireless Wall Sounder SYG-WSR

The Sygno-fi Wall Sounder is a EN 54-3 (Type B) compliant acoustic device, equipped with 3 levels of volume adjustment and 32 recognised tones which can be set via the control equipment or locally at the sounder. Red and white housing options are available.



### Sygno-fi Wireless Wall Sounder VAD SYG-SBR

This Sounder VAD is a EN 54-3 (Type B) and EN 54-23 compliant visual/alarm device is equipped with 3 levels of volume adjustment, high output LED beacon, and 32 recognised tones which can be set via the control equipment or locally at the sounder.



### Sygno-fi Remote Indicator SYG-RI

The SYG-RI Sygno-fi Wireless Remote Indicator is a programmable output device which can be operated by the control panel in the event of fire, alarm or fault conditions from selected devices.



### Sygno-fi Wireless Input Module SYG-IM

The SYG-IM Sygno-fi Input Module has a single fully monitored input circuit which allows simple integration of third party equipment with the fire system.



### Sygno-fi Wireless Output Module SYG-OM

This Output Module has been designed to allow easy control of a variety of third party equipment including access control doors, ventilation plant and fire extinguishing systems. The unit is powered entirely from its internal battery supply. Mains rated version available.



### Sygno-fi Translator Module SYG-W2W

The Sygno-fi Translator Module is the core component of the Sygno-fi intelligent hybrid fire detection and alarm system. When connected on to a compatible loop, the unit is capable of linking up to 128\* fully intelligent wireless field devices with the fire alarm system. (\*when associated with at least 3 x Sygno-fi Expander Modules).



### Sygno-fi Expander Module SYG-EM

The unit provides a convenient method to increase radio communication range beyond that possible from a single translator by relaying the radio communication to further expanders or directly to the wireless field devices, allowing to build large fully wireless systems or add wireless devices onto areas where cabling is difficult or impossible.



### Sygno-fi Conventional Expander Module SYG-CEM

The Sygno-fi Conventional Expander Module has been designed to allow the integration of wireless detection and alarm type field devices onto almost any type of system.

# WIRELESS FIRE SYSTEMS



## Sygnof-i Wireless Dongle SYG-DD

The SYG-DD dongle device allows the user to wirelessly connect the PC to the translator for system management purposes (commissioning, debugging and diagnostic). Compact and easily portable, the device is powered by USB cable once connected to the pc or by the two on board batteries.



## Sygnof-i Wireless Survey Kit SYG-STK SYG-STK-TAB - with Tablet

A comprehensive test kit housed in a rugged case that allows for one man radio integrity surveys to be carried out to determine the location and optimum quantities of Sygnof-i translators, expanders and field devices.



## Sygnof-i Wireless Sounder Interface Module SYG-SIM

The Sygnof-i Wireless Sounder Interface Module is designed for use with the Sygnof-i range of modular wall sounders and sounder beacons.

For Sygnof-i by Eurotech  
detection, control and alarm  
devices in black, please use the  
product codes below.



CODE	PRODUCT DESCRIPTION
SYG-BS-B	Sygnof-i Wireless Sounder Base
SYG-BSB-23W-B	Sygnof-i Wireless Sounder VAD Base
SYG-EM-B	Sygnof-i Expander Module
SYG-MA-B	Sygnof-i Wireless Multi-Sensor Detector
SYG-PA-B	Sygnof-i Wireless Optical Detector
SYG-TA-B	Sygnof-i Wireless Heat Detector
SYG-W2W-B	Sygnof-i Translator Module



# WIRELESS FIRE SYSTEMS

## euro-fi by Eurotech



Euro-fi is a complete range of intelligent, fully addressable battery-powered detectors, call points, sounders and modules communicating through a sophisticated wireless protocol.

With high levels of reliability and quick installation, Euro-fi wireless offers a convenient and reliable method of extending existing or new hardwired intelligent fire detection systems, particularly into areas of high architectural sensitivity or where access is restricted.



### Euro-fi Wireless Heat Detector

EUW-TA-02

A fully intelligent device compatible with all Euro-fi wireless translator and expander modules. Designed for open area protection giving the best possible warning of a fire condition in locations where smoke detection technology is not suitable.



### Euro-fi Wireless Multi-Criteria Detector

EUW-MA-02

A fully intelligent device designed for open area protection. Combines both dual-path smoke and heat detection technologies for improved performance, whilst maintaining the high levels of unwanted alarm rejection.



### Euro-fi Wireless Optical Detector

EUW-PA-02

The detector is designed for open area protection and utilises dual-path optical smoke detection technologies and algorithms for improved performance, whilst maintaining the high levels of unwanted alarm rejection.



### Euro-fi Wireless Manual Call Point

EUW-CP-RS

This fully intelligent device has a resettable plastic element, which displays a drop down warning flag when operated. A key is supplied with the MCP for reset and case opening.

# WIRELESS FIRE SYSTEMS



## **Euro-fi Wireless Sounder Base**

**EUW-BS-02**

The device has an integral moulded base for mounting a Euro-fi wireless detector or a sounder cover if a detector is not required. Standard 32 recognised sounder tones and 2 levels of volume adjustment, all of which can be easily configured on site.



## **Euro-fi Wireless Sounder VAD Base**

**EUW-BSB-02**

The unit has as standard 32 recognised sounder tones and 2 levels of volume adjustment, all of which can be easily configured on site. Additional to the audible warning the unit is also fitted with a LED visual indicator for added warning capability.



## **Euro-fi Wireless Wall Sounder**

**EUW-WSR-01 - red**

**EUW-WSW-01 - white**

The Euro-fi wall sounder is a EN 54-3 (Type B) compliant acoustic device, equipped with 3 levels of volume adjustment and 32 recognised tones which can be set locally at the sounder.



## **Euro-fi Wireless Wall Sounder VAD**

**EUW-SBR-01**

The wireless wall sounder VAD is a EN 54-3 (Type B) and EN 54-23 compliant visual/ alarm device, equipped with 3 levels of volume adjustment, high output LED beacon, and 32 recognised tones which can be set locally at the sounder.



## **Euro-fi Remote Indicator**

**EUW-RI-02**

The remote indicator is a low profile unit with large red LED panel, which can be used to indicate a variety of events or alarms on the fire system. When used with the Euro-fi translator module the unit is fully programmable through the control equipment cause and effect.



## **Euro-fi Wireless Input Module**

**EUW-IM-01**

The Euro-fi input module has been designed to provide a simple solution for monitoring third party equipment. The unit has a single fully monitored input circuit which allows easy integration of third party equipment with the fire system.



## **Euro-fi Wireless Output Module**

**EUW-BOM-01**

The Euro-fi output module has been designed to allow easy control of a variety of third party equipment including access control doors, ventilation plant and fire extinguishing systems.

# WIRELESS FIRE SYSTEMS



## **Euro-fi Translator Module** **EUW-W2W-01**

The Euro-fi translator module is one of the core components of the Euro-fi intelligent hybrid fire detection and alarm system. When connected on to a compatible loop, the unit is capable of linking up to 32 fully intelligent wireless field devices with the fire alarm system.



## **Euro-fi Expander Module** **EUW-EM-01**

The unit provides a convenient method to increase radio communication range beyond that possible from a single translator by relaying the radio communication to further expanders or directly to the wireless field devices.



## **Euro-fi Conventional Expander Module** **EUW-CEM-02**

The Euro-fi conventional expander module has been designed to allow the integration of wireless detection and alarm type field devices into almost any type of system.



## **Euro-fi Wireless Door Holder** **EUW-DHR-01**

The Euro-fi wireless door holder device is fully wireless with battery powered capability. This means it requires no wiring or power supply, making installation quick, easy and cost effective.



## **Euro-fi 24V 1.5A EN54-4 Power Supply Unit** **EUW-PSU1-02**

Ideal for powering beam detectors, auto-dial communicators, aspirating smoke detectors, auto-open vent systems, auxiliary sounder systems or any other device performing a mandatory function of a fire alarm system.



## **Euro-fi Survey Kit** **EUW-STK-03**

The Euro-fi survey kit is a comprehensive test kit housed in a rugged case. The kit allows for one man radio integrity surveys to be carried out to determine the location and optimum quantities of Euro-fi translators, expanders and field devices.

# Intelligent Fire Control Panels

---



# INTELLIGENT FIRE CONTROL PANELS

**tccare**  
by Eurotech



The Toccare® Intelligent Touch Screen Panel demonstrates the latest in fire alarm technology - the world's first fully touch screen, EN54 certified fire alarm panel.

Toccare® by Eurotech is the first range of truly aesthetically designed fire alarm panels developed to slip seamlessly into high-end, exclusive surroundings.

## Toccare One Fire Control Panel

All Toccare One panels are expandable up to 9 loops and come with 56 zone LEDs.

The Toccare® Touch Screen Panel is one of the slickest fire alarm panels on the market. Its clean, minimalistic design aesthetic combined with innovative features and functionality makes it ideal for architects, prestigious buildings and high-end sites where presentation is key.

The end-user can access details such as events, alarms, faults and more, with the use of their own five digit password, different to the engineer's access code.

CODE	PRODUCT DESCRIPTION
700-100LED	Toccare One 1 Loop Panel - White
700-300LED	Toccare One 3 Loop Panel - White
700-500LED	Toccare One 5 Loop Panel - White
700-700LED	Toccare One 7 Loop Panel - White
700-900LED	Toccare One 9 Loop Panel - White
700-100LEDB	Toccare One 1 Loop Panel - Black
700-300LEDB	Toccare One 3 Loop Panel - Black
700-500LEDB	Toccare One 5 Loop Panel - Black
700-700LEDB	Toccare One 7 Loop Panel - Black
700-900LEDB	Toccare One 9 Loop Panel - Black

# INTELLIGENT FIRE CONTROL PANELS

## Toccare Mini Fire Control Panel

The Toccare Touch Screen Mini Panel is the Toccare Panel's smaller brother. It comes in a compact, convenient package, creating an attractive look that still includes excellent features. With its clean, minimalistic design, it fits seamlessly into any building where aesthetic compatibility is key. The Mini Panel is fully compatible with both wired and wireless devices.

CODE	PRODUCT DESCRIPTION
700-101	Toccare Mini Single Loop Fire Control Panel - White
700-101(B)	Toccare Mini Single Loop Fire Control Panel - Black

## Toccare Lite Half Loop Fire Control Panel

This fire alarm control panel comes in a smaller package, yet still delivers reliable usage for the end-user. With a clean and more minimal design than most fire alarm control panels, it fits into any building and offers aesthetics you will be proud to show off. The Lite 120 Device panel is fully compatible with both wired and wireless systems.

CODE	PRODUCT DESCRIPTION
700-100L	Toccare Lite Half Loop Fire Control Panel with 16 LEDs - White
700-100L(B)	Toccare Lite Half Loop Fire Control Panel with 16 LEDs - Black

## Toccare One Repeater Panel

The Toccare Repeater panel is an aesthetically pleasing device that repeats information from the main control panel. A compact design, just 210mm x 120mm x 30mm, that meets the compromise between aesthetics and fire safety!

CODE	PRODUCT DESCRIPTION
700-200	Toccare One Repeater Panel - White
700-200B	Toccare One Repeater Panel - Black

## Toccare Bezels

Toccare Mini Bezel also fits the Toccare Lite Control Panel.

CODE	PRODUCT DESCRIPTION
700-CBW	Toccare One Bezel - White
700-CBB	Toccare One Bezel - Black
700-MBW	Toccare Mini Bezel - White
700-MBB	Toccare Mini Bezel - Black

# INTELLIGENT FIRE CONTROL PANELS

## Toccare Accessories

CODE	PRODUCT DESCRIPTION
700-LOOP	Expandable 2 Loop Cards
ONE_MODBUS	Multiprotocol External Module for MODBUS over TCP IP
700-LEAD	Toccare Firmware Update Leads
700-PS	Toccare One - Additional Power Supply
700-NET	Network Card for Toccare One Touch Screen Panel



Ampac provides a range of addressable fire systems, conventional fire systems, evacuation, digital solutions, marine fire systems, and ancillary items.

With over 45 years of experience, Ampac has provided solutions and systems for a variety of aged care, airports, commercial, data centres, education, government, healthcare, high-rise, hotels and marine applications.



### LoopSense 1 Loop 32 Zone Fire Alarm Panel

8281-0105

LoopSense is an Intelligent Analogue Addressable Fire Alarm Control Panel. The LoopSense comes packed with features that facilitate flexibility, ease of installation and commissioning. LoopSense is suitable for small to medium-sized fire detection systems and is compatible with Apollo XP95, Discovery, Xplorer and Series 90 detectors.



### FireFinder Plus 4 Loop Panel

510-0408A

FireFinder Plus is an Intelligent Analogue Addressable Fire Alarm Control Panel that is suitable for medium to large-sized fire detection systems and is compatible with Apollo XP95 and Discovery Detectors.



### FireFinder Plus Repeater Panel

511-0002

Designed to remotely display the status and provide control of the FireFinder Fire Alarm Control Panel.

## Ampac Accessories

CODE	PRODUCT DESCRIPTION
4310-0060	8 Way Sounder Output Board
4310-0096	FireFinder Plus Comms Extender Board
PSU2397	Replacement 3A Power Supply Unit for LoopSense Panels
HW2306	LoopSense Control Enable Key - Set of 2
LCK03KEY	LoopSense Panel Door Access Key - Set of 2

# eurotech<sup>®</sup>

## FIRE SYSTEMS LIMITED

The Eurotech control panel series consists of the latest dual flash-based microprocessor technology combined with a high resolution, high contrast, graphical LCD display and tactile keypad providing a simple select and click programming aid for engineer configuration and end-user operation.

There are also 4 programmable function buttons with LED indication for confirmation of operation.



### Eurotech 1 Loop Intelligent Fire Control Panel

#### EUR-5101N

The Eurotech 1 loop control panel is supplied with a single loop driver card, 2 onboard sounder circuits, 20 programmable zonal LEDs with slide-in labels, and 25 system LEDs for information purposes.



### Eurotech 1 to 2 Loop Intelligent Fire Control Panel

#### EUR-5202N

This Eurotech control panel is fully expandable from 1 - 2 loops and supplied with 2 onboard sounder circuits, 20 programmable zonal LEDs with slide-in labels, and 25 system LEDs for information purposes.



### Eurotech 1 to 4 Loop Intelligent Fire Control Panel

#### EUR-5401N - 1 loop

#### EUR-5402N - 2 loop

#### EUR-5404N - 4 loop

The Eurotech series is fully expandable from 1 to 4 loops and supplied with 4 onboard sounder circuits, 20 programmable zonal LEDs with slide-in labels, and 25 System LEDs for information purposes.





Advanced fire protection products are built in the UK to exacting local and international standards. Through careful design and testing, they deliver enduring performance, quality and ease of use.

The wide range of versatile products includes fire panels, extinguishing control, paging panels and customised solutions designed to meet your exact needs.



**MxPro5 1 Loop Fire Panel**  
MX-5101

The Advanced MX-5101 control panel is supplied with a single loop driver card, 2 onboard sounder circuits, 20 programmable zonal LEDs with slide-in labels, and 25 system LEDs for information purposes.



**MxPro5 1-2 Loop Fire Alarm Panel**  
MX-5201 - 1 loop card

MX-5202 - 2 loop cards

The Advanced MX-5200 series control panels are fully expandable from 1 - 2 loops and supplied with 2 onboard sounder circuits, 20 programmable zonal LEDs with slide-in labels, and 25 system LEDs for information purposes.



**MxPro5 MX-5401 1 - 4 Loop Intelligent Control**

MX-5401 - 1 loop card  
MX-5402 - 2 loop cards

MX-5403 - 3 loop cards  
MX-5404 - 4 loop cards

The Advanced series is fully expandable from 1 to 4 loops and supplied with 4 onboard sounder circuits, 20 programmable zonal LEDs with slide-in labels, and 25 System LEDs for information purposes.



**MxPro5 2 - 8 Loop Intelligent Control**

MX-5802 - 2 loop cards  
MX-5803 - 3 loop cards  
MX-5804 - 4 loop cards  
MX-5805 - 5 loop cards

MX-5806 - 6 loop cards  
MX-5807 - 7 loop cards  
MX-5808 - 8 loop cards

The MxPro 5 series is fully expandable from 2 to 8 loops and supplied with 8 onboard sounder circuits, 20 programmable Zonal LEDs with slide-in labels, and 25 System LEDs for information purposes. There are also 8 programmable function buttons with LED indication for confirmation of operation.

# INTELLIGENT FIRE CONTROL PANELS



## MxPro5 Remote Display Terminal

**MX-5010**

**MX -5010F/T - Fault Tolerant**

The remote terminals utilise the same graphical LCD user interface that can be found on the MxPro 5 series fire panels and are based upon the same advanced, flash based, microprocessor technology.



## MxPro5 Remote Control Terminal

**MX-5020**

**MX-5020F/T - Fault Tolerant**

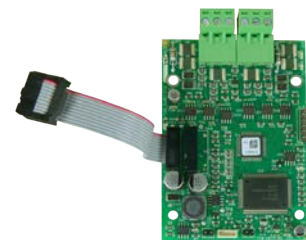
**MX-5030 - Large**

**MX-5030F/T - Large/Fault Tolerant**

The remote terminals utilise the same graphical LCD user interface that can be found on the MxPro 5 series fire panels and are based upon the same advanced, flash based, microprocessor technology. The MxPro 5 panels and remote terminals can communicate over the same 2-core network cable. They feature an integral network interface incorporating a special screen termination to prevent mains frequency earth-loop currents flowing between network nodes.

## Network Cards & Accessories

CODE	PRODUCT DESCRIPTION
MXP-502	MxPro5 Loop Driver Card - Apollo, Hochiki, Argus Vega
MXP-503	Advanced MxPro5 MXP-503 Standard Network Card
MXP-503F	Advanced MxPro5 MXP-503 Standard Network Card - Fitted
MXP-509	Advanced MXP-509 MxPro5 Fault Tolerant Network Card
MXP-509F	Advanced MXP-509 MxPro5 Fault Tolerant Network Card- Fitted
MXP-003	Advanced MXP-003 Network Card
MXP-009	Advanced Fault Tolerant Network Card
PC-NET-003	Advanced PC-NET-003 Software & Lead



## Advanced Go Single Loop Fire Alarm Panel

**GO1+**

**GO1V**

The Go series is an evolution for non-networked single-loop fire alarm systems. A new ergonomic layout of control panel is combined with a high resolution, high contrast, graphical LCD display. The tactile keypad allows simple select-and-click programming for faster engineer configuration and simple end-user operation.

Two performance options are available with a different maximum number of configurable addresses, allowing greater flexibility for site-specific installations: Go and Go+.

# INTELLIGENT FIRE CONTROL PANELS



Established in 1981, C-TEC is a leading UK independent manufacturer of quality life safety electronic equipment with a portfolio of products that includes conventional and addressable fire alarm systems, power supplies, automatic extinguisher systems, disabled refuge systems, call systems and hearing loop systems.

If you're looking for quality life safety equipment, You're Safe With C-TEC!



## XFP 1 Loop 16 Zone Addressable Fire Panel

XFP501E/X - XP95/Discovery XFP501E/H - Hochiki

C-TEC's XFP single loop 16 zone addressable fire alarm panel offers high performance at a very competitive price.

LPCB certified to EN54 parts 2 & 4, it is supplied in an attractive flush or surface mountable plastic enclosure, offers combined keypad or keyswitch entry to Access Levels 2 and 3.



## XFP 1 Loop 32 Zone Addressable Fire Panel

XFP501/X - XP95/Discovery XFP501/H - Hochiki

C-TEC's XFP single loop 32 zone addressable fire alarm panel is LPCB certified to EN54 parts 2 & 4, is supplied in durable metal enclosure, and offers combined keypad or keyswitch entry to Access Levels 2 and 3. Ideal for use in small stand-alone applications or in larger applications due to its ability to sit on network of up to 8 XFP master panels.



## XFP 2 Loop 32 Zone Addressable Fire Panel

XFP502/X - XP95/Discovery XFP502/H - Hochiki

C-TEC's XFP two loop 32 zone addressable fire alarm panel is LPCB certified to EN54 parts 2 & 4 and offers combined keypad or keyswitch entry to Access Levels 2 and 3.

Packed full of engineering features, the XFP502 is also fully compatible with C-TEC's Hush Button fire alarm solution and its new range of EN54 certified addressable sounders and VADs.

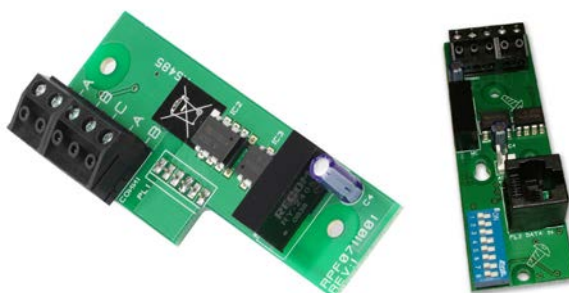
## XFP Repeater Panel

Can be used to repeat the functions of an XFP Main panel at remote parts of a site. Offers all of the functions and controls of an XFP Main panel (access levels 1, 2 and 3).

CODE	PRODUCT DESCRIPTION
XFP510-16	XFP 16 Zone Repeater Panel - All Protocols
XFP510-32	XFP 32 Zone Repeater Panel - All Protocols

## Network Cards & Accessories

CODE	PRODUCT DESCRIPTION
XFP761	XFP Network Driver Card for 16 Zone Panels
AFP711	AFP/XFP Network Driver Card
CFP761	CFP/XFP Network Driver Card



# INTELLIGENT FIRE CONTROL PANELS



## EVOTECH®

The Evotech range of fire control panels combine compact and practical styling with the programming power and connectivity normally associated with much larger systems.

With its ease of use and simplicity to install, Evotech AS is straightforward to understand for installers, commissioning engineers and end users alike. Using the latest microprocessor, it provides a flexible control system with high reliability and integrity.



### Evotech Lite Addressable Panel

#### 600-100

Evotech Lite is an analogue addressable fire control panel, offering a cost-effective solution for smaller standalone installations requiring only one detection loop. Being a multi-protocol panel, enabling choice to our customers, Evotech supports Apollo, Argus Vega and Hochiki detection, making it ideal for small and medium sites that require advanced fire sensing and evacuation options.

### Evotech AS Panel

Evotech AS is an analogue addressable fire control panel, available in either one or two detection loops. A multi-protocol panel, Evotech AS supports Apollo, Argus Vega and Hochiki detection.

CODE	PRODUCT DESCRIPTION
600-101	Evotech AS Lite Panel c/w Enable Key Switch
600-102S	Evotech AS 1 Loop Addressable Panel
600-103S	Evotech AS 1 loop Control c/w Enable Key Switch
600-106S	Evotech AS 2 Loop Analogue Addressable Panel
600-107S	Evotech AS 2 Loop Addressable Panel c/w Enable Key Switch

### Accessories

CODE	PRODUCT DESCRIPTION
600-LOOP	Evotech AS Loop 2 Extension Card - Eurotech Protocol
600-NET	Evotech Fault Tolerant Network Card

# INTELLIGENT FIRE CONTROL PANELS



Founded in 1985, Kentec is an end-to-end manufacturer, designing and building all of its extinguishant and fire detection panels in Kent, England.

Kentec manufactures products approved to EN54, EN12094, UL, FM, NFPA and marine classification societies.



## Syncro Lite Addressable Panel

LA81161M2- Apollo Protocol

LH81161M2- Hochiki Protocol

Syncro Lite is an analogue addressable fire control panel, offering a cost-effective solution for smaller standalone installations requiring only one detection loop. Being a multi-protocol panel, enabling choice to our customers, Evotech supports Apollo, Argus Vega and Hochiki detection, making it ideal for small and medium sites that require advanced fire sensing and evacuation options.

## Syncro AS Panel

Syncro AS is an analogue addressable fire control panel, available in either one or two detection loops. A multi-protocol panel, Syncro AS supports Apollo, Argus Vega and Hochiki detection.

PRODUCT DESCRIPTION	Apollo Protocol	Hochiki Protocol
Syncro AS Lite Panel c/w Enable Key Switch	LA80161M2	HA80161M2
Syncro AS 1 Loop Addressable Panel	A81161M2	H81161M2
Syncro AS 1 loop Control c/w Enable Key Switch	A80161M2	H80161M2
Syncro AS 2 Loop Analogue Addressable Panel	A81162M2	H81162M2
Syncro AS 2 Loop Addressable Panel c/w Enable Key Switch	A80162M2	H80162M2

## Accessories

PRODUCT DESCRIPTION	Apollo Protocol	Hochiki Protocol
Syncro AS Loop 2 Extension Card	K586A	K586H
Syncro Fault Tolerant Network Card	K555	K555

# INTELLIGENT FIRE CONTROL PANELS



Designed to be easy to use and cost-effective, the Esprit 1-2 & 1-4 Loop addressable control panels are reliable and robust intelligent fire systems.

With up to 240 devices per loop with Apollo Soteria devices, these panels are compact in their styling but with powerful programming.



## Esprit 1 to 2 Loops Argus Addressable Panel ESA-1001

Extendable up to two loop circuits, and with up to 240 devices per loop, the control panels' compact styling and programming power make it ideal for all small and medium site requirements.

The large graphical display with easy-to-navigate menus provides fast and simple setup and maintenance.



## Esprit 1 to 4 Loops Argus Addressable Panel ESA-1002

Extendable up to four loop circuits, and with up to 240 devices per loop, the large graphical display with easy-to-navigate menus provides fast and simple setup and maintenance.

Esprit-A panels support the full range of Argus protocol devices including their range of wireless accessories.

## Accessories

CODE	PRODUCT DESCRIPTION
ESA-3001	Esprit Addressable Loop Card Kit - Argus Protocol



# Twin Wire Fire Control Panels

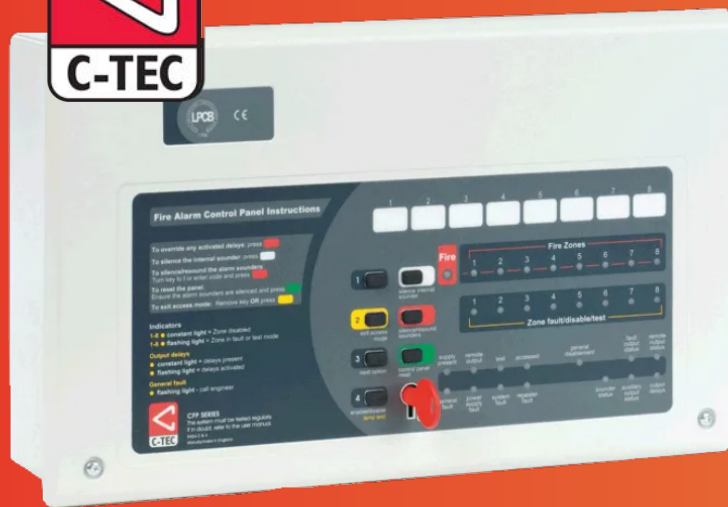
---



# TWIN WIRE FIRE CONTROL PANELS



**AlarmSense**



Most conventional fire systems require two pairs of wires per zone: one for detection devices such as fire detectors; the other for alarm devices such as sounders.

By using different voltage bands for quiescent and alarm states, it allows detection and alarm devices to be connected on the same pair of supply wires.

The result? A winning combination of innovative fire alarm technology that can reduce installation costs by up to 25%.



## AlarmSense 2-8 Zone Two-Wire Fire Alarm Panel

- CFP702-2 2 zone panel
- CFP704-2 4 zone panel
- CFP708-2 8 zone panel

LPCB certified to EN54-2/4, C-Tec's CFP two-wire 2 to 8-zone AlarmSense fire panel is designed to work with Apollo's AlarmSense range of detectors, call points, sounders and visual indicators.

Most conventional fire systems work with two pairs of wires per zone: one pair for detection devices; the other for alarm devices. By using different voltage bands for quiescent and alarm states, AlarmSense components can be connected to the same pair of supply wires.

This reliable technology takes all of the complexity out of fire system design, leading to quicker, more flexible installation and around a 20-25% reduction of labour over a standard four wire system.



# TWIN WIRE FIRE CONTROL PANELS

## INFINITY *id2*

Zeta Alarm Systems introduces the most advanced 2 wire system on the market.

Zeta provides a system that gives all the benefits associated with a '2 Wire' installation (less cable, quicker installation, cost savings on labour and product) and has the capability to 'I.D.' the devices.



### Infinity ID2 Fire Alarm Panel

ID2/2 2 zone panel

ID2/4 4 zone panel

ID2/8 8 zone panel

The most advanced 2-wire system on the market.

The Infinity ID2 can be used for new installations, as a retrofit for any conventional system, or as a replacement for existing 2-wire systems when the extra features are deemed to be desirable/necessary. This is possible because the Infinity ID2 devices sit on radial circuits, thus making it easy to 'upgrade' a system with the facility to I.D. devices without the need to rewire.



### Infinity ID2 Repeater Panel

ID2/REP

Can be programmed to act as fully functional (ability to silence/reset) or passive (shows alarm info only)

Includes zonal LEDs and LCD display

4 cores required from ID2 panel (2 data + 2 power)

Can be powered from 24V auxiliary PSU in the ID2 panel



The Sigma CP-A AlarmSense® range consists of a series of conventional, two, four and eight zone fire alarm control panels.

### Sigma CP-A AlarmSense Conventional Panel

KA11020M2 2 zone panel

KA11040M2 4 zone panel

KA11080M2 8 zone panel

The AlarmSense system enables all detection and sounder devices in a given zone to be wired to the same pair of cables, greatly reducing the cabling and installation requirements and hence costs.



# Conventional Fire Control Panels

---



# CONVENTIONAL FIRE CONTROL PANELS

## eurotech<sup>®</sup> FIRE SYSTEMS LIMITED

The Eurotech conventional fire control panels are available with 2, 4, 6 or 8 zones.



### Eurotech Conventional Control Panel

2500/2	2 zone panel
2500/4	4 zone panel
2500/6	6 zone panel
2500/8	8 zone panel

The Eurotech conventional control panel is housed in the most attractive, modern-designed, flame retardant ABS enclosure, utilising a switch mode power supply. It has a fully removable front cover which improves ease of access for cable installations.

C-TEC's award-winning CFP conventional fire panel is LPCB certified to the latest revisions of EN54 parts 2 and 4 and offers an array of user and installer-friendly features at a very competitive price.

Supplied in an attractive flush or surface mountable plastic enclosure, 2, 4 and 8 zone versions are available.



### CFP Economy Control Panel

CFP702E-4	2 zone panel
CFP704E-4	4 zone panel
CFP708E-4	8 zone panel

Each panel features four conventional sounder circuits, class change and alert inputs, on-board fire and fault relays and combined keypad/keyswitch entry.

A wide range of engineering functions are also provided including selectable zone delays, coincidence and non-latching zone facilities. Comprehensive test and fault finding facilities are also provided.

### CFP Conventional EN54 Control Panel

CFP702-4	2 zone panel
CFP704-4	4 zone panel
CFP708-4	8 zone panel

LPCB certified to EN54-2/4, C-TEC's CFP conventional fire alarm panels offer an array of user and installer-friendly features at a very competitive price.

Supplied in an attractive flush or surface mountable plastic enclosure, it includes two detector zones, four conventional sounder circuits, class change and alert inputs, on-board fire and fault relays and combined keypad/keyswitch entry.

# CONVENTIONAL FIRE CONTROL PANELS



Haes is one of the UK's leading manufacturers of fire alarm system control equipment.

All Haes products are designed and manufactured in the UK, going through a rigorous 3-stage performance test and all come with a 3 year warranty as standard.



## ESENTO Eclipse Conventional Control Panel

ECL-200 2 zone panel  
ECL-400 4 zone panel

With an array of engineering options including Twin Wire setting by DIL switch, programmable zones & outputs, false alarm management mode, non latching zones and class change input the Eclipse is the most dynamic entry level fire panel on the market today. The display uses super bright, clearly labelled LED indicators and the colour coded buttons give the end user the confidence to correctly manage their fire alarm system.

## ESENTO Excel Conventional Control Panel

XLEN-2 2 zone panel  
XLEN-4 4 zone panel  
XLEN-6 6 zone panel  
XLEN-8 8 zone panel  
XLEN-12 12 zone panel

Esentto Excel fire alarm control panels offer unrivaled flexibility with all their available auxiliary connections, ease of installation and a fully comprehensive suite of programmable features including: configurable inputs & outputs, one man test mode, diagnostics modes, output delays, 3 false alarm management modes, Twin Wire zones and in-built networking capabilities.



## ESENTO Evoque Conventional Control Panel

XL32-16 16 zone panel  
XL32-24 24 zone panel  
XL32-32 32 zone panel

Esentto Evoque is our large conventional fire panel offering and is available with 16, 24 or 32 zones. These fire panels include most of the engineering functions of the flagship Excel 2-12 zone panel including 3 false alarm management modes and in-built networking capabilities. Up to 8 Esentto Excel or Evoque panels can be networked to provide up to 256 zones!

# CONVENTIONAL FIRE CONTROL PANELS

## ADDITIONS

CODE	PRODUCT DESCRIPTION
XL-RDU	ESENTO Remote Display Unit
XLEN-R-12	ESENTO 12 Way Fully Functional / Passive Repeater Panel



Kentec's Sigma CP range of conventional fire control panels are designed for the most demanding of conventional fire detection and alarm system applications. The extensive range of configuration features ensures suitability for new installations or panel replacements on older systems.

### Sigma CP Conventional Panel

- KL11020M2 2 zone panel incl. LMCU
- KL11040M2 4 zone panel incl. LMCU
- KL11080M2 8 zone panel incl. LMCU
- K11020-M2 2 zone panel
- K11040-M2 4 zone panel

Easy to install, the Sigma CP is available with two, four or eight detection zones in standard or installation saving, 'two wire' versions. Sigma CP control panels are compatible with most standard, conventional detectors, call points and sounders and are also compatible with 'two wire' detector bases from Apollo and Hochiki.



# Intelligent Fire Devices

---



# INTELLIGENT FIRE DEVICES



Eurotech's intelligent Odyssey fire range includes a complete selection of detection, control and alarm devices.



## Odyssey Intelligent Multisensor Detector 200-505

The Odyssey multisensor detector contains an optical smoke sensor and a thermistor temperature sensor whose outputs are combined to give the final analogue value.



## Odyssey Intelligent Optical Smoke Detector 200-503

The Odyssey optical detector is distinguished by the indicator LED which is clear in standby and red in alarm. Within the case is a printed circuit board which on one side has the light proof labyrinth chamber with integral gauze surrounding the optical measuring system and on the other the address capture, signal processing and communications electronics.



## Odyssey Intelligent Standard Heat Detector 200-501

The Odyssey Heat Detector monitors temperature by using a single thermistor which provides a count output proportional to the external air temperature. Ideal for environments that are dirty or smoky under normal circumstances.



## Odyssey Intelligent Hi-Temp Heat Detector 200-502

The Odyssey Intelligent heat detectors have a common profile with ionisation and optical smoke detectors but have a low airflow resistance case made of self extinguishing white polycarbonate. The devices monitor heat by using a single thermistor network which provides a voltage output proportional to the external air temperature.



## Odyssey Intelligent Base 200-111

The Odyssey Intelligent smoke and heat detectors all fit the Odyssey Intelligent standard base. The base is a zero insertion force base with dual finger receptacles of stainless steel into which the detector terminals slide. Cable connections of up to 2.5mm diameter are made via captive cable clamps.



## Odyssey Isolator Base 200-112

The Isolator is placed at intervals on the loop and ensures that, in the case of a short circuit, only the section between the isolators will be affected. When the short circuit is removed, the isolators automatically restore power and data to the isolated section.



## Odyssey Isolating Base 200-113

The Isolating Base senses and isolates short circuit faults on loops and spurs. The base is loop-powered, polarity sensitive and accepts the XPERT card to set the associated device address. In short-circuit conditions, the integral yellow LED is illuminated.

# INTELLIGENT FIRE DEVICES



## Odyssey Intelligent Manual Call Point with Isolator

200-500A

44251-189APO      Transparent Hinged Cover

The Odyssey Intelligent Manual Call Point has been designed to operate on a loop of intelligent fire detection devices and when activated interrupts the polling cycle for a very fast response.



## Odyssey Isolator

200-504

The Isolator is placed at intervals on the loop and ensures that, in the case of a short circuit, only the section between the isolators will be affected. When the short circuit is removed, the isolators automatically restore power and data to the isolated section.



## Odyssey Zone Monitor with Isolator

200-203

The Odyssey Zone Monitor powers and controls the operation of a zone of up to 20 Odyssey from Eurotech and Series 65 from Apollo from the Odyssey and Apollo loop.



## Odyssey Mini Switch Monitor

200-201

Odyssey's Mini Switch Monitor is designed to fit into equipment with limited space or mounted within an enclosure such as a manual call point. It can also be fitted onto a standard 35mm DIN-rail. The unit monitors the state of one or more single-pole, volt-free contacts and reports the contact status to Odyssey-compatible control panels.



## Odyssey Sounder Control Unit with Isolator

200-206

The sounder control unit with isolator allows the device to be operated continuously or be pulsed with 1 second on and 1 second off. The devices can be operated individually or in groups and may be synchronised when in pulsed operation.



## Odyssey Wall Mounted Sounder

200-103

The Odyssey open-area alarm devices are loop-powered, wall-mounted devices that are connected to any Odyssey Intelligent System. A nominal sound output of 100dB(A) is achieved at a current consumption of 5mA for the sounder.



## Odyssey Wall Mounted Sounder Beacon IP65

200-104

The Odyssey open-area alarm devices are loop-powered, wall-mounted devices that are connected to any Odyssey Intelligent System. A nominal sound output of 100dB(A) is achieved at a current consumption of 5mA for the sounder beacon.



## Odyssey Wall Mounted Beacon

200-105

The Odyssey open-Area alarm devices are loop-powered, wall-mounted devices designed for use in open areas and can be connected to any Odyssey, Discovery or CoreProtocol system.



# INTELLIGENT FIRE DEVICES



## Intelligent Input/Output Unit 200-204SA

The Odyssey Intelligent Input / Output Unit provides supervision of one or more normally open contacts connected to a single pair of cables and a set of changeover relay output contacts.



## Odyssey Loop Powered Beacon 200-110

The Odyssey loop powered beacon is a local-area visual indicator designed for indoor use. The visual indicator device has been developed as a supplement to sounders for use in situations where there is a risk that sounders will not be heard.



## Integrated Base Sounder - Isolating 45681-277APO

The Integrated Base Sounder comprises a base sounder with integral mounting base, and is designed for indoor use with Discovery and XP95 detectors.



## XP95 Loop Powered Sounder Visual Indicator Base 45681-330APO

The Sounder Beacon Base can be used either with a detector fitted or with a cap for operation as a stand-alone alarm device. The Sounder Beacon Bases are supplied with a built-in isolator. A version without an isolator is also available.



## XP95 Visual Indicator Base with Isolator 45681-333APO

The Visual Indicator Base is used to signal a fire alarm in enclosed areas. The visual indicator base can be used with either a detector fitted or with a cap as a stand-alone alarm device.



## Intelligent Switch Monitor 200-202SA

The Intelligent Switch Monitor Module is used to monitor one or more single pole, volt free contacts connected on a single pair of cables and report status to fire control panel.



## Intelligent Mains Switching Input/Output Unit 200-208SA

The Intelligent Input/Output Module is used to monitor two single pole, volt free contact inputs and control mains switching relay output contacts.



## Intelligent Twin Input/Output Unit 200-209SA

The Intelligent Twin Input/Output Module is used to monitor two or more single pole, volt free contact inputs and control mains switching relay output contacts.



## Intelligent Twin Switch Monitor 200-210SA

The Intelligent Twin Switch Monitor Module provides the function of two Switch Monitor Modules to monitor one or more single pole, volt-free contacts connected on a single pair of cables and report the status to the fire control panel.

# INTELLIGENT FIRE DEVICES

## eurotech<sup>®</sup> FIRE SYSTEMS LIMITED

The Eurotech intelligent field device series consists of detection, control and alarm devices to build a comprehensive, robust fire alarm system.



### Intelligent Multi-Sensor Detector

100-2400V

The EURV-PH multi-sensor detector detects smoke by the Tyndall effect and supervises environmental temperature with low thermal inertia via a centrally placed NTC thermostat. The combined data of optical and thermal provides the earliest warning of fire offering at the same time a high level of false alarm rejection.



### Intelligent Optical Smoke Detector

100-2100V

100-2101V - with Isolator

The EURV-P optical detector detects smoke by the Tyndall effect and continuously samples the air in the protected area to provide the earliest warning of fire offering at the same time a high level of false alarm rejection. A bi-directional isolator is fitted to the EURV-PI to help protect against wiring faults and allows auto addressing on compatible control panels.



### Intelligent Heat Detector

100-2200V

100-2201V - with Isolator

The EURV-H-A1R heat detector supervises environmental temperature with low thermal inertia allowing the device to operate as an A1R or BS detector.

The detector can be used as either an A1R or BS heat detector. This is selectable using the 100-8003a programming tool.



### Intelligent Multicriteria Detector

100-2401V

The EURV-PHI analogue Multi-Sensor Detector is a point detection device that continuously samples the air and the temperature variation in the protected area to provide the earliest warning of a fire condition and offers a high level of false alarm rejection. The Detector is designed for open area protection and must only be connected to Fire Control Panels that use the Eurotech proprietary communication protocol.

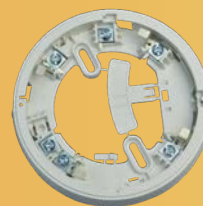


# INTELLIGENT FIRE DEVICES

## Intelligent Standard Mounting Base

100-3000V

The Eurotech EURB-4-EV standard intelligent low profile mounting base has been designed for the installer making the installation of fire detectors easier and more use friendly. This base is fully compatible 100-2101V, 100-2401V and 100-2201V Eurotech detectors. EURB-4-EV detector base has been designed with peripheral contacts to provide maximum space for wiring connections.



## Enhanced Sounder Base (Slave)

100-2015V

The 100-2015V is an aesthetically pleasing low profile 32 tone audio/visual base sounder suitable for all devices in the Eurotech range of intelligent detectors. It offers class-leading acoustic performance with extremely low current consumption.



## Intelligent Base Sounder/Beacon

100-5011V

The 100-5011V is a fully intelligent low-profile Base Sounder with combined 360° visual indicator. By utilising the Eurotech fully digital communication protocol, reliable, fast operation is achieved even when employing the impressive 240-device loop capacity.



## Base Sounder/Beacon VAD - White LED (Slave)

100-2017V

The 100-2017V is an aesthetically pleasing low-profile 32-tone audio/visual base sounder with combined white visual indicator, suitable for all devices in the Eurotech range of intelligent detectors. It offers class-leading acoustic and EN54-23 compliant visual performances with extremely low current consumption.



## Intelligent Base Sounder Beacon (c/w Altair base, white LED)

100-2018V

The 100-2018V is an aesthetically pleasing low-profile 32-tone audio/visual base sounder with combined white visual indicator, suitable for all devices in the Eurotech range of intelligent detectors.



## Eurotech Intelligent Base Sounder

100-2010V

Eurotech's 100-2010V intelligent base sounder loop powered device is designed to be fully compatible with the Eurotech intelligent range of devices.



## Intelligent Manual Call Point c/w Isolator

100-2203V

SY-RK01 Reset Key - Black (Pack of 10)

The Eurotech resettable indoor call point is smooth and quick to install thanks to the easy wiring design and the front operating element that snaps into place requiring no additional tools. The call point benefits from improved levels of visibility thanks to a reflective polyester flag at the bottom of the operating face and a brightly illuminated LED ring in the centre of the active area which allows the alarm condition to be viewed over a wide angle of 170 degrees.



# INTELLIGENT FIRE DEVICES



## Single Supervised Input Module

100-2025V

100-2027V

The Eurotech Supervised Input Modules are loop powered and operate using the Eurotech protocol. The input channel is supervised and will detect normal/short/alarm/open conditions. Fast alarm and fault signalling. It is available in different shapes, and useful for different installation requests. This device is designed to meet EN54-18 standards and provides high reliability and error detection.



## Single Supervised Output Module

100-2030V

100-2045V

The Eurotech Supervised Output Modules are loop powered and operates using the Eurotech protocol. A double bi-colour (red/green) LED driven by the control panel indicates the module condition. Available in different shapes, useful for different installation requests.



## Eurotech Single Input & Single Supervised Output Module

100-2031V

100-2035V - Mini Mount

The Eurotech Supervised Input Output Modules are loop powered and designed around a fully digital protocol. The input channel is supervised and will detect normal/short/alarm/open conditions. An additional opto-coupled input active in de-energized condition supervises the external power supply.



## Single Relay Output Module (no box)

100-2033V

100-2034V - Mini Module

One output loop-powered relay module is based on an SPDT relay. The output channel is normally a de-energized relay switched on by a command from the control panel. It is switched on by a special command from the control panel.



## Single Input & Single Relay Output Module

100-2037V

100-2038V - Mini Mount

The Eurotech single input and relay output modules are loop powered and designed around a fully digital protocol. The input channel is supervised and will detect normal/short/alarm/open conditions.



## Intelligent AV Wall-Mounted Sounder Beacon - Red

100-2039V

The Addressable Waterproof wall sounder beacon forms the core of our EN54-23 Visual Alarm Device range. The 100-2039V has a flexible modular design, allowing our Eurotech Conventional Sounder VAD (100-3800V) to be made addressable with the use of the Addressable Sounder Interface Module (100-2050V) giving a uniform system design.

# INTELLIGENT FIRE DEVICES

## Intelligent Wall Mounted Sounder - Red

100-2041V

The 100-2041V has a flexible modular design, allowing our Eurotech Conventional Sounder (100-3801V) to be made addressable with the use of the Addressable Sounder Interface Module (100-2050V) giving a uniform system design. The unit has a built-in microphone which allows the unit to indicate a fault should the sounder not operate when activated or tested.



## 240V Mains Rated Relay Unit

100-8240V

EURV-MRU 240V Mains Rated Relay Unit (+100-2034V)



## Programmer Unit plus Leads

100-8003V

The EURV-AD2 handheld programming tool is designed to program various parameters stored within the Eurotech range of detectors. All other intelligent devices can be programmed via a plug-in cable that is supplied with this device. The 100-8003a is also designed to program the Eurotech base sounders or base sounder beacons and also heat detectors.



## ADDITIONAL PRODUCTS

CODE	PRODUCT DESCRIPTION
300-2012	Eurotech Remote Indicator
100-5013LIDR	Red Cover for Base Sounder (Wired)
100-5013LIDW	White Cover for Base Sounder (Wired)
NCP-14/4	Eurotech PVC Module Back Box 44mm
NCP-14	Eurotech Module Back Box 40mm
NCP-8	1G 35mm Flush Mount Back Box
NCP-9	1G White 25mm Surface Mount Back Box

# INTELLIGENT FIRE DEVICES

## SOTERIA®

The SOTERIA® collection offers the next generation in fire recognition technology and has been developed to improve detection, reduce false alarms and deliver improved reliability.



### Soteria Heat Detector

SA5100-400APO

The Soteria Heat Detector features two heat sensors located laterally to ensure accurate heat detection in all orientations.



### Soteria Optical Smoke Detector (Isolated)

SA5100-600APO

The Soteria Optical Smoke Detector uses advanced optical sensing technology, PureLight, to provide advanced false alarm management and increased detector reliability.



### Soteria Multi-Sensor Detector (Optical/Heat)

SA5100-700APO

The Soteria Multi-Sensor Detector uses advanced optical sensing technology, PureLight, to detect smoke particles entering the chamber and is fitted with two thermistors for detecting heat. It easily discriminates against false alarm stimuli and is a great environmentally friendly alternative to ionisation detectors.



### Soteria Dimension Optical Smoke Detector

FL5100-600APO

The innovative design of the Soteria Dimension Optical Detector differs from standard fire detectors, having no chamber and being flush mounted.



### Soteria Dimension Optical Smoke Detector - Specialist

FL6100-600APO

The Soteria Dimension Specialist Optical Detector is independently certified to DHF TS001 for anti-ligature use in specialist areas.



### Soteria Dimension Backbox

FL5000-200APO

The Soteria Dimension Mounting Box is moulded from white flame-retardant polycarbonate. Positions for either side or top cable entry are marked on the outside of the Mounting Box to ensure correct cable positioning.

# INTELLIGENT FIRE DEVICES



The XP95 range of intelligent fire detectors is advanced in design, improved in performance and has unique features that benefit the installer and end-user.

## XP95 Heat Detector (A2S)

55000-400APO

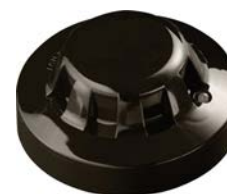
The XP95 Heat Detector (A2S) monitors temperature by using a single thermistor which provides a count output proportional to the external air temperature, reporting an alarm at 55°C.



## XP95 Optical Smoke Detector - Black

55000-660APO

The XP95 Optical Smoke Detector uses the light scatter principle to quickly and effectively detect a range of slow-burning and smouldering fires.



## XP95 Open Area Multi-Tone Sounder

55000-274APO

The XP95 Open-Area Multi-Tone Sounder is designed for use in open areas and can be connected to any Discovery or XP95 system.



## XP95 Weatherproof Multi-Tone Sounder Visual Indicator - Red

55000-296APO

The XP95 Open-Area Multi-Tone Sounder VID is designed for use in outdoor open areas and can be connected to any Discovery or XP95 system.



## XP95 Weatherproof Multi-Tone Open-Area Sounder VID - Isolated

55000-298APO

The XP95 Open-Area Multi-Tone Sounder VID is designed for use in outdoor open areas. The product is loop-powered and does not require an external power supply. It is capable of 100dB(A) achieved at a current consumption of 5mA in the case of the sounder and 9mA for the sounder Visual Indicator.



## XP95 Multi-Tone Open-Area Sounder - Red

55000-278APO

The XP95 Open-Area Multi-Tone Sounder is designed for use in open areas and can be connected to any Discovery or XP95 system.



## XP95 Sounder Beacon Base

45681-331APO

XP95 Sounder Visual Indicator Base with integral isolated mounting base. Designed for indoor use.



# INTELLIGENT FIRE DEVICES



## **XP95 Sounder VAD Base with Isolator**

**45681-705APO**

XP95 Sounder VAD Base with integral isolated mounting base. Two-Tone EN54-3 Sounder. Designed for indoor use.



## **XP95 Loop Powered Sounder Visual Indicator Base**

**45681-330APO**

XP95 Sounder Visual Indicator Base with integral isolated mounting base. Designed for indoor use.



## **XP95 Integrated Base Sounder**

**45681-278APO**

**45681-277APO - Isolating**

The sounder base comprises a base sounder with integral mounting base and is for use with Discovery or XP95 ranges. It is designed for indoor use.



## **XP95 Ancillary Base Sounder**

**45681-276APO**

XP95 Sounder Base - Ancillary with mounting base. Activated via Detector head, does not take up an address. Multiple selectable volumes. Designed for indoor use.



## **XP95 Three Channel Input/Output Module - Isolating**

**55000-588APO**

The XP95 Input/Output Module - Three Channel - Isolating is used to control and monitor the operation of a circuit of conventional sounders or bells.



## **XP95 Base - Black**

**45681-361APO**

The base is a low insertion force base with stainless steel contacts for the detector terminals. XPERT cards are supplied with all bases.



# INTELLIGENT FIRE DEVICES



- Improved false alarm rejection
- Suitable for medium to large buildings
- Flexibility for system design with interchangeability of devices and modes available

## Discovery Optical Smoke Detector 58000-600APO

The Discovery Optical Smoke Detector are high-specification devices using the light scatter principle to quickly detect fire while effectively managing false alarms.



## Discovery Heat Detector 58000-400APO

The Discovery Heat Detector features a low air flow resistance case and a single thermistor to sense the air temperature around the detector.



## Discovery CO/Heat Multi-Sensor Detector 58000-305APO

The Discovery Multi-Sensor Detector contains a CO detection cell and a thermistor temperature sensor whose outputs are combined to give the final analogue value.



## Discovery Multi-Sensor Detector 58000-700APO

The Discovery Multi-Sensor Detector consists of optical smoke and thermistor temperature sensors which give a combined signal for improved false alarm management.



## Discovery CO Fire Detector 58000-300APO

The Discovery Carbon Monoxide Detector contains a long-life electro-chemical carbon monoxide sensor which is tolerant of low levels of common vapours and household products.



## Discovery Open Area Sounder Visual Indicator - White 58000-007APO

The Discovery Open-Area Sounder Visual Indicator makes full use of the Discovery protocol and has been designed for use in indoor and open areas. When the fire system is being commissioned a 'Magnetic Wand' can be used to adjust and test each sounder locally.



## Discovery Open Area Voice Sounder - Red 58000-010APO

Discovery Open-Area Voice Sounders comprise a sounder and a sounder visual indicator that have been designed to provide clear instructional messages through the Discovery protocol. They are loop-powered wall-mounted devices.



# INTELLIGENT FIRE DEVICES



## Discovery Sounder Beacon Base

45681-393APO

Discovery Sounder Visual Indicator Base with integral isolated mounting base. Designed for indoor use. 15 Pairs of Tones (EN54-3 Sounder). 7 Selectable Output Volumes. Visual Indicator Beacon (White-Flash)



## Discovery Sounder Base with Isolator

45681-702APO

Discovery Sounder Base with integral isolated mounting base. Designed for indoor use. 15 Pairs of Tones. EN54-3 Sounder. Multiple Selectable Output Volumes.



## Discovery Manual Call Point with Isolator

58100-908APO

The Discovery Manual Call Point is used to manually initiate an alarm signal on the fire detection system. EN 54-11 & EN 54-17 Certified.



## Discovery Waterproof Manual Call Point

58100-950APO

58100-951APO - with Isolator

The Manual Call Point is used to manually initiate an alarm signal on the fire detection system. EN 54-11 Certified. Reports an alarm in under 0.2 seconds.



## Discovery Waterproof Manual Call Point

58200-950APO

58200-951APO - with Isolator

The Discovery Manual Call Point is used to manually initiate an alarm signal on the fire detection system. EN 54-11 & EN 54-17 Certified. Resettable operating element.



## Discovery Marine Heat Detector

58000-400MAR

The Discovery Marine Heat Detector features a low airflow resistance case and a single thermistor to sense the air temperature around the detector.



## Discovery Marine Optical Smoke Detector

58000-600MAR

The Discovery Marine Optical Smoke Detector are high-specification devices using the light scatter principle to quickly detect fire while effectively managing false alarms.



## Discovery Marine Multi-Sensor Detector

58000-700MAR

The Discovery Marine Multi-Sensor Detector consists of optical smoke and thermistor temperature sensors which give a combined signal for improved false alarm management.



## Discovery Marine Sounder Beacon Base

45681-394MAR

The Discovery Marine Sounder Visual Indicator Base makes full use of the Discovery protocol. For ease of commissioning, a 'Magnetic Wand' can be used to test and adjust each sounder locally.

# INTELLIGENT FIRE DEVICES

## Discovery Marine Manual Call Point 58100-970MAR

The Discovery Marine Manual Call Point is commonly used to manually control extinguishant release. EN 54-11 Certified. Reports an alarm in under 0.2 seconds.



## Discovery Marine Waterproof Manual Call Point 58200-975MAR

### 58200-976MAR - with Isolator

The Discovery Manual Call Point is used to manually initiate an alarm signal on the fire detection system. Suitable for weatherproof applications. EN 54-11 Certified.



- Fast and reliable fire detection in hazardous areas
- A range of products available to create a comprehensive intrinsically safe system

**XP95**  
INTRINSICALLY SAFE

## XP95 I.S. Heat Detector 55000-440APO

The XP95 I.S. Heat Detector is distinguishable from XP95 I.S. smoke detectors by its low air-flow resistance case which allows good contact between the sensing thermistor and the surrounding air.



## XP95 I.S. Optical Smoke Detector 55000-640APO

The XP95 I.S. Optical Smoke Detector uses the light scatter principle to quickly and effectively detect a range of slow-burning and smouldering fires.



## XP95 I.S. Manual Call Point 55100-940APO 55200-940APO

The Manual Call Point is used to manually initiate an alarm signal on the fire detection system. The Manual Call Point is suitable for use in areas where explosive atmospheres are, or may, be present.



## XP95 I.S. Base 45681-215APO

The XPERT 7 I.S. Base has been designed to accept only I.S. products. This ensures that standard detectors cannot inadvertently be fitted into an intrinsically safe system.



## XP95 I.S. Single Protocol Translator 55000-855APO

The XP95 Protocol Translator is installed in the safe area ensuring integrity of communication between control equipment and field devices.



## XP95 I.S. Galvanic Barrier 29600-098APO

The XP95 I.S. Galvanic Barrier is installed in the safe area and ensures system integrity. Enables compliance with the ATEX directive.



**Intelligent Switch Monitor Module**  
SA4700-100APO

The Intelligent Switch Monitor Module is used to monitor one or more single pole, volt-free contacts connected on a single pair of cables and report status to the fire control panel.



**Intelligent Input/Output Unit**  
SA4700-102APO  
SA4700-103APO - 250V

The Intelligent Input/Output Module is used to monitor single pole, volt free contact inputs and control relay output contacts. The 250V version monitors two single pole inputs.



**Intelligent Input/Output Module (Twin)**  
SA4700-104APO

The Intelligent Input/Output Module provides the function of two Input/Output Modules to monitor single pole, volt-free contact inputs and control relay output contacts.



**Intelligent Switch Monitor Module (Twin)**  
SA6700-100APO

The Intelligent Twin Switch Monitor Module provides the function of two Switch Monitor Modules to monitor one or more single pole, volt-free contacts connected on a single pair of cables and report status to the fire control panel.



**Intelligent DIN-Rail Switch Monitor**  
SA4700-300APO

The Intelligent DIN-Rail Switch Monitor Module is used to monitor one or more single pole, volt-free contacts connected on a single pair of cables and report status to fire control panel.



**Intelligent DIN-Rail Input/Output Unit**  
SA4700-302APO

The Intelligent DIN-Rail Input/Output Module is used to monitor single pole, volt-free contact inputs and control relay output contacts.



**ADDITIONAL PRODUCTS**

CODE	PRODUCT DESCRIPTION
45681-204APO	Conduit Box
45681-292APO	Apollo Locking Sounder Cap - White
45681-293APO	Apollo Locking Sounder Cap - Red
SA7800-870APO	Apollo Touchscreen Portable Test Set
53546-022APO	Intelligent Duct Detector Housing
53832-070APO	MiniDisc Remote Indicator
45682-800APO	XPERT Universal Address Card (Pack of 25)
SA5000-200APO	XPERT 8 Intelligent Mounting Base



# INTELLIGENT FIRE DEVICES



Established early in the 20th Century, Hochiki is one of the world's leading manufacturers of commercial and industrial fire detection and emergency lighting solutions.

With a heritage of innovative design and leading-edge technologies, Hochiki's products have acquired global acceptance as the benchmark for high-integrity and long term reliability.

## Photoelectric Smoke Sensor

ALN-EN Ivory Case  
ALN-EN-WHT White Case

The Photoelectric Smoke Sensor incorporates Hochiki's newest High-Performance Chamber Technology removing the need to use Ionisation Smoke Sensors in the majority of applications. This also allows the sensor threshold level to be increased, thereby improving the signal-to-noise ratio and reducing susceptibility to false alarms.



## Multi-Heat Sensor

ATJ-EN-IVY Ivory Case  
ATJ-EN-WHT White Case

The Multi-Heat Sensor with SCI is fully compatible with Hochiki's ESP Analogue Addressable Protocol. It incorporates a Variable Temperature heat element and a Rate of Rise heat element, both of which are controlled from the Control Panel, allowing either the thermal element or both elements simultaneously to be active in making the fire decision.



## Weatherproof Multi-Heat Sensor

ACB-EW Ivory Case

The Waterproof Multi-Heat Sensor incorporates a variable Fixed Temperature heat element and a Rate Of Rise heat element, both of which are controlled from the Control Panel, allowing either the thermal element or both elements simultaneously to be active in making the fire decision.



## Addressable Remote Indicator

CHQ-ARI Ivory Case, Clear Lens

The CHQ-ARI is a loop-powered Addressable Remote Indicator, with high-intensity LEDs and a Fresnel lens design that produces a highly visible signal. The casing exactly matches the Hochiki ESP Sensor range in shape and colour providing seamless integration.



## Single Input Module - MK1 Protocol

CHQ-SIM

The CHQ-SIM has been designed to allow a single monitored input to be connected to the ESP loop. This provides a compact, low-cost option where the installation of the larger CHQ 'Smart-Fix' Range of Modules might be difficult.



## Single Output Module

CHQ-SOM

The CHQ-SOM has been designed to allow a single relay output to be connected to the ESP loop. The unit incorporates a volt-free relay contact that can be configured as either N/O or N/C, the relay contact is rated to 30 V dc (max), 1 A (resistive load).



# INTELLIGENT FIRE DEVICES

## Powered Output Module

### CHQ-POM

Model CHQ-POM is a powered-output module designed to supply 24 VDC at various, user-selectable current levels from 2 to 32 mA (in increments of 2 mA). The unit is small enough to be added to other third-party devices thereby allowing a range of equipment to be added to the ESP loop.



## Dual Zone Monitor with SCI

### CHQ-DZM(SCI)

Model CHQ-DZM(SCI) is a Dual Circuit Zone Controller designed to allow up to 60 conventional detectors (30 on each zone) to be interfaced to Hochiki's ESP analogue addressable system. The unit also features a Schottky Diode line continuity option, when used in conjunction with the optional LCMU.



## Dual Sounder Controller with SCI

### CHQ-DSC2(SCI)

Model CHQ-DSC2(SCI) is a Dual Sounder Controller, which has been designed to provide two sounder outputs (that can be driven separately) with full fault monitoring. The monitored input can be used for local power supply fault monitoring or as a general-purpose input.



## Dual Relay Controller with SCI

### CHQ-DRC2(SCI)

Model CHQ-DRC2(SCI) is a Dual Relay Controller designed to provide two general-purpose relay outputs, each output can be driven separately for control of such devices as dampers or for control of plant and equipment shutdown.



## Mains Relay Controller with SCI

### CHQ-MRC2(SCI)

Model CHQ-MRC2(SCI) is a Single Input/Output Module, which provides a single, mains-rated relay output for the control of such devices as dampers, extractors or plant and equipment shutdown. The monitored input can be used for local power supply fault monitoring or as a general-purpose input.



## Dual Input Module - DIN Enclosure with SCI

### CHQ-DIM2/DIN(SCI)

Model CHQ-DIM2/DIN(SCI) is a Dual Input Module designed to interface to a variety of inputs such as door contacts, sprinkler flow/door switches and plant equipment.



## Wall Sounder

### CHQ-WS2 Red Case

Model CHQ-WS2 is an addressable loop-powered Wall Sounder innovatively designed to provide a range of tones and volumes with a maximum output of up to 102dB(A) ( $\pm 2$ dB(A)) with low current consumption.



## Wall Sounder Beacon

### CHQ-WSB2/RL

Red Case, Red LEDs

### CHQ-WSB2(WHT)/RL

White Case, Red LEDs

The CHQ-WSB2 is an addressable loop powered Wall Sounder Beacon innovatively designed to provide a range of tones and volumes with a maximum output of up to 102dB(A) ( $\pm 2$ dB(A)) with low current consumption.



## Addressable Loop-Powered Beacon

CHQ-AB(WHT) Red Lens, White Case

The CHQ-AB range consists of addressable loop-powered Beacons, with high intensity LEDs and a Fresnel lens design that produces a highly visible flash. The casings exactly match the Hochiki ESP Sensor range in shape and colour providing seamless integration.



## Mounting Base for Wall Sounders

YBO-R/3(RED) Red  
YBO-R/3(WHT) White

Model YBO-R/3 is a Sounder Mounting Base, which is fully compatible with Hochiki's ESP range of sensors and designed specifically for the Hochiki range of wall sounders, the CHQ-WS2 Wall Sounder and the CHQ-WSB2 Wall Sounder Beacon.



## Addressable Base Sounder

YBO-BS(IVORY) Ivory  
YBO-BS(WHT) White

Model YBO-BS is an addressable loop powered Base Sounder designed to give a range of tones/volumes with a max. output of up to 98 dB(A) ( $\pm 2$  dB(A)) with low current consumption.



## Base Sounder Beacon

YBO-BSB2/RL Ivory Case, Red LEDs  
YBO-BSB2/WL Ivory Case, White LEDs  
YBO-BSB2(WHT)/RL White Case, Red LEDs

Model YBO-BSB2 is designed to give a range of tones and volumes with a maximum output of up to 98 dB(A) ( $\pm 2$  dB(A)) with low current consumption. The sounder is Ingress Protection rated to IP21 and for internal use only.



## Sensor Mounting Base

YBN-R/3 Ivory  
YBN-R/3(WHT) White

Model YBN-R/3 is a Common Mounting Base, which is fully compatible with Hochiki's ESP range of sensors. It is supplied with square cable clamps for secure and reliable cable termination and is also capable of driving a remote LED if required.



## Short Circuit Isolator Base

YBN-R/3(SCI) Ivory  
YBN-R/3(WHT)-SCI White

Model YBN-R/3(SCI) is a sensor mounting base featuring an integral short circuit isolator that will detect and isolate short circuits on the loop. When a short-circuit is detected during power up the unit will drop the power to the rest of the loop.



## Addressable Manual Call Point with SCI

HCP-E(SCI)  
SRMOUNTINGBOX MCP Back Box  
PS200 MCP Cover

Model HCP-E(SCI) is a Manual Call Point with integral short-circuit isolator, which is fully compatible with Hochiki's ESP analogue addressable protocol.



# INTELLIGENT FIRE DEVICES



## NITTAN

Nittan was established in 1972 in the UK and has grown to become a major force in the EMEA fire protection industry.

With the extensive support facilities of our Tokyo parent company, Nittan Europe now supplies in excess of 500,000 detectors per year, all of which are made to marine standard for exceptional quality.

### EURV-PH Intelligent Multisensor Optical & A1R Heat Detector

100-2400

The EURV-PH is a combined Optical Smoke and Heat Detector in one unit. This advanced Multi Sensor is able to combine the benefits of both optical and heat sensing technologies making it less prone to false alarms than individual sensing devices.



### EURV-P Intelligent Optical Smoke Detector

100-2100

The EURV-P optical detector detects smoke by the Tyndall effect and continuously samples the air in the protected area to provide the earliest warning of fire offering at the same time a high level of false alarm rejection.



### EV-PYS Intelligent Optical Detector with Built-In Sounder

F20\_82510

Benefiting from the same sophisticated detection technology as the EV-P, the EV-PYS Optical Detector comes with a sounder fully integrated within the sensor itself as opposed to a separate sounder base.



### EURV-H-A1R Intelligent ROR Heat Detector

100-2200

The EURV-H-A1R heat detector supervises environmental temperature with low thermal inertia allowing the device to operate as an A1R or BS detector. The detector can be used as either an A1R or BS heat detector.



### EURV-H-CS Intelligent Heat Detector 84 Deg C

100-2201

Unlike smoke detectors that detect the presence of smoke particles, heat detectors only react to changes in temperature. The EV-H-CS is a Thermistor based Heat Detector, which use electronic components that change their resistance when heated.





# INTELLIGENT FIRE DEVICES

## EURV-Zone Monitor Module

100-2023

The conventional zone monitor connects a zone of conventional detectors to a Eurotech intelligent loop. The device has an on-board relay output driven by the control panel. The conventional zone module is designed to provide different current limits.



## Input & Output Modules

Nittan's extensive range of Evolution Analogue Modules – which have a sleek design for aesthetic appeal – is designed for the monitoring and controlling of many types of third-party equipment. The Output Module is EEPROM Addressed (Programmer), using the EV module address lead.

CODE	PRODUCT DESCRIPTION
100-2027	EV-OP Output Module
F16N82033	EV-IP Input Module
100-2031	EV-SIO Single Input/Output Module
F16_82260	EV-2I10 Dual Input, Single Output Module - c/w -ve SCI & MRO



## EV-HIOP-SDR High Output Sounder - Non-Isolated

F16N82061

IP65 rated as standard, the EV-HIOP-SDR is an extremely cost-effective wall-mounted sounder. It comes with 32 alarm tones (3 Approved) to choose from and individually controlled alarm and alert tones, allowing customers to choose a combination that works for any installation.



## EV-HIOP-SB-R High Output Sounder Beacon - Red Flash

F16N82053

IP65 rated as standard, the EV-HIOP-SB-R is an extremely cost-effective wall-mounted red LED sounder/beacon (VAD). It comes with 32 alarm tones (3 Approved) to choose from and individually controlled alarm and alert tones.



## EURB-6-EV Standard Intelligent Base

100-3000

The Nittan EURB-6-EV is a universal mounting base designed to be compatible with the entire range of Evolution detectors to provide a reliable and secure fixing point for each of your selected detectors.

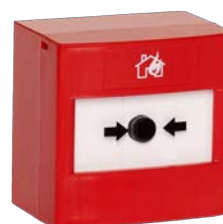


## EV-MCP2-IP24-04 Reset Call Point - with Back Box and Wall Plate

F16\_82201

CI Integral Cover for STI Call Point

The Evolution Manual Call Point is DIL Switch Addressed and comes with both Backbox & RF Wall Plate as standard. The clear Integral Cover is moulded from tough, UV-stabilised polycarbonate, and protects from minor damage as recommended by BS 5839-1: 2017.



# INTELLIGENT FIRE DEVICES

# id2

The Infinity ID2 range is available with a choice of 4 different automatic detectors; standard optical smoke, rate of rise heat, fixed temperature heat and a combined optical smoke & rate of rise heat.



### Infinity ID2 60° Fixed Heat Detector

ID2-BHF	Black, No Sounder
ID2-BHF/S	Black, Sounder/Beacon
ID2-HF	White, No Sounder
ID2-HF/S	White, Sounder/Beacon

The Infinity ID2-HF/BHF is a fixed-temperature heat detector for use with the ID2 range of two-wire fire alarm control panels. The detector is available in black or white, with or without an integral sounder/beacon.



### Infinity ID2 90° Fixed Heat Detector

ID2-BHFCS90	Black, No Sounder
ID2-BHFCS90/S	Black, Sounder/Beacon
ID2-HFCS90	White, No Sounder
ID2-HFCS90/S	White, Sounder/Beacon

This Infinity detector is a fixed-temperature heat detector for use with the ID2 range of two-wire fire alarm control panels. The detector is available in black or white, with or without an integral sounder/beacon.



### Infinity ID2 Rate of Rise Heat Detector

ID2-BHR	Black, No Sounder
ID2-BHR/S	Black, Sounder/Beacon
ID2-HR	White, No Sounder
ID2-HR/S	White, Sounder/Beacon

The Infinity ID2-HR/BHR is a rate-of-rise heat detector for use with the ID2 range of two wire fire alarm control panels. The detector is available in black or white, with or without an integral sounder/beacon.



### Infinity ID2 Combined Smoke & Heat Detector

ID2-BOH	Black, No Sounder
ID2-BOH/S	Black, Sounder/Beacon
ID2-OH	White, No Sounder
ID2-OH/S	White, Sounder/Beacon

The Infinity ID2-OH/BOH is a combined smoke & heat detector for use with the ID2 range of two wire fire alarm control panels.. The detector is available in black or white, with or without an integral sounder/beacon.

## Infinity ID2 Optical Smoke Detector

ID2-BOP	Black, No Sounder
ID2-BOP/S	Black, Sounder/Beacon
ID2-OP	White, No Sounder
ID2-OP/S	White, Sounder/Beacon

The Infinity ID2-OP/BOP is an optical smoke detector for use with the ID2 range of two-wire fire alarm control panels. The detector is available in black or white, with or without an integral sounder/beacon.



## Infinity ID2 Kit

ID2-KIT2	2 Zone Kit
ID2-KIT4	4 Zone Kit
ID2-KIT8	8 Zone Kit

The ID2 is the most flexible and advanced two-wire system on the market. Installers benefit from a choice of radial or loop wire modes. In the case of the radial configuration, no end of lines are required and devices can be spurred off one another. Following the auto-configuration, each device on the system can be given a 20-character description. This means in the event of a fire or fault the exact device will be displayed on the panel's LCD display (for instance, "Main Office" or "Bedroom 1").

ID2-KIT2 Infinity ID2 Kit contains:

- 1 x Infinity ID2 2, 4 or 8 Zone panel
- 2 x Zeta 7.2Ah Sealed Lead Acid Battery
- 6 x ID2-OP/S Optical Smoke Detectors with Sounder
- 1 x ID2-HR/S Rate of Rise Heat Detector with Sounder
- 2 x ID2 Manual Call Point
- 2 x Call Point Covers
- 1 x Red Safety Isolator Switch



## Infinity ID2 Indoor Manual Callpoint

### ID2-MCP

The ID2-MCP call point is unique in that it mimics the feel of breaking glass whilst offering the user the benefits and environmental advantages of a re-settable operating element. Addressing these call points is via an 8-way dip switch on the back of the call point. It comes with a surface back box.



# Conventional Fire Devices

---



# CONVENTIONAL FIRE DEVICES



Eurotech's conventional Odyssey fire range includes a complete selection of detection, control and alarm devices.



## Odyssey Conventional Optical Smoke Detector

200-404

The Odyssey Conventional Optical Smoke Detector has a moulded, self-extinguishing white polycarbonate case with wind-resistant smoke inlets.



## Odyssey Conventional Heat Detector

200-400 A1R Heat Detector

200-401 BR Heat Detector

200-402 CR Heat Detector

200-403 CS Heat Detector

The Odyssey conventional heat detectors have a moulded self-extinguishing white polycarbonate case. A pair of matched negative temperature co-efficient thermistors are mounted on the PCB in such a way that one thermistor is exposed to give good thermal contact with the surrounding air while the other thermistor is thermally insulated.



## Odyssey Conventional Standard Mounting Base

200-300

All detectors in the Odyssey conventional range fit into standard mounting bases.

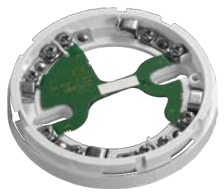
The bases are of 100mm diameter and have five terminals marked according to their function; line 1 in, line 1 out, line 2 in and out, remote indicator negative, earth.



## Odyssey Conventional Diode Base

200-301

The Odyssey Diode Base is designed for use with conventional systems that have manual call points and detector bases on the same circuit. The base is fitted with a Schottky diode on the "L1 IN" and "L1 OUT" wiring terminals.



## Odyssey Conventional Sav Wire Base

200-302

The Odyssey Sav-Wire Base is designed to allow Odyssey conventional detectors to be used in 'Sav-Wire' detection and alarm systems.



## Odyssey Conventional Relay Base

200-303

The Odyssey Standard Relay Base provides one set of volt-free changeover (form C) contacts that change state when the detector signals an alarm.

# CONVENTIONAL FIRE DEVICES



- Fast and easy installation
- Ideal for use in small/medium buildings and houses in multiple occupancy (HMOs)
- Static and rate-of-rise Heat Detectors in the range for a variety of environments



## AlarmSense Conventional Optical Smoke Detector

55000-390APO	Detector
55000-392APO	Detector & Sounder Base
55000-394APO	Detector & Sounder VID Base
55000-395APO	Integrating Detector & Sounder VID Base

The AlarmSense Optical Smoke Detector works using the light scatter principle. The detector changes to alarm state at a pre-set threshold of smoke penetration into the sensing chamber. EN54-7 Optical Smoke Detector. BS 5839 Compliant. Easy to Install and extend.



## AlarmSense Conventional A1R Heat Detector

55000-190APO	Detector
55000-196APO	Detector & Sounder Base

The AlarmSense Heat Detector (A1R) has a fixed upper limit, but in addition, measures the rate of increase in temperature. Can be used for applications where smoke detectors are unsuitable. Ideal environments that are dirty or smoky under normal conditions.



## AlarmSense Conventional CS Heat Detector

55000-193APO	Detector
55000-197APO	Detector & Sounder Base
55000-199APO	Detector & Sounder VID Base

The AlarmSense Heat Detector (CS) responds when a fixed temperature has been reached. Can be used for applications where smoke detectors are unsuitable. Ideal environments that are dirty or smoky under normal conditions.



## AlarmSense Conventional Base

45681-244APO

AlarmSense detectors can only be mounted into the AlarmSense Base. The base is used for installing detectors that do not require an integral sounder or sounder visual indicator.



## AlarmSense Conventional Sounder Base

45681-510APO

The base monitors the presence of detectors and signals any unauthorised removal of detector heads. It is supplied with a high or low-volume setting and red or white caps are available for stand-alone installation.



# CONVENTIONAL FIRE DEVICES

## AlarmSense Sounder Beacon Base

45681-509APO

The base is designed to be used with AlarmSense systems only. It is supplied with a low or high-volume setting and red or white caps are available for stand-alone installation. Sounder range between 70dB(A) and 87dB(A).



## AlarmSense Open Area Sounder

55000-018APO

Sounder

55000-017APO

Sounder VID

The AlarmSense Open-Area Sounder is designed for use in open areas. Polarity insensitive. IP65 rated. Synchronised flashing red LED on sounder visual indicators.



## AlarmSense Manual Call Point

55400-894APO

44251-189APO

Transparent MCP Cover

The Manual Call Point has been designed to operate on an AlarmSense two-wire loop. An alarm is initiated by pressing the resettable element, which rotates to display yellow and black indication bars and a solid red LED.



## AlarmSense Alarm Relay

55000-835APO

The AlarmSense Alarm Relay Module enables devices such as visual indicators, pillow/bed alarms and radio vibrating or paging devices to be connected to the fire detection system. This allows the system to comply with the requirements of the DDA.



# orbis®

Orbis is a range of conventional detectors which has been developed and tested to create advantages for fire engineers and installers.

- Quicker and easier installations and servicing
- Improved false alarm rejection
- Variety of detectors for fast, accurate fire detection in different environments



## Orbis Conventional Multi-Sensor Detector

ORB-OH-13001-APO

Detector

ORB-OH-13003-APO

Detector with Flashing LED

Orbis Multi-Sensor Detectors are recognised as good detectors for general use but are additionally more sensitive to fast-burning, flaming fires – including liquid fires – than optical detectors.



## Orbis Conventional Optical Smoke Detector

ORB-OP-02032-APO

Non-Latching

ORB-OP-12003-APO

Flashing LED

The Orbis Optical Smoke Detector operates on the well-established light scatter principle. The sensing technology used is radically different from previous optical detectors and significantly reduces false alarms.



# CONVENTIONAL FIRE DEVICES

## Orbis Conventional Heat Detector

ORB-HT-11001-APO	A1R Heat Detector
ORB-HT-11013-APO	A1R Heat Detector with Flashing LED
ORB-HT-11003-APO	BR Heat Detector
ORB-HT-11015-APO	BR Heat Detector with Flashing LED
ORB-HT-11005-APO	CR Heat Detector
ORB-HT-11006-APO	CS Heat Detector

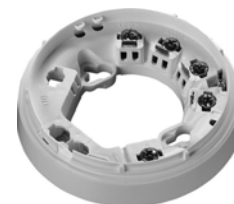
The Orbis Heat Detectors monitor temperature by using a single thermistor which provides a voltage output proportional to the external air temperature. Can be used for applications where smoke detectors are unsuitable. Ideal in environments that are dirty or smoky under normal conditions.



## Orbis Conventional Base

ORB-RB-10004-APO	TimeSaver Base
ORB-MB-00012-APO	TimeSaver LX Base
ORB-MB-00001-APO	TimeSaver Base
ORB-MB-00002-APO	TimeSaver LX Base without Continuity Switch
ORB-DB-00003-APO	TimeSaver Base - Diode
ORB-MB-00019-APO	TimeSaver Base - Deep
ORB-SW-10005-APO	Sav-Wire Base
29600-321	TimeSaver Base -Open-Area AV, Deep

The Orbis Base is a design that provides installers with an open working area with fixing holes shaped to allow a fast mounting procedure. Grouped terminals to make wiring easy. Two fixing centres. LED alignment mark. Cable stripping guide. Detector locking mechanism.



## Orbis Conventional Open-Area Sounder

29600-322	Red Sounder
29600-323	Red VID Sounder

The Conventional Open-Area Sounder is a conventional sounder that makes use of the TimeSaver Base resulting in a faster and more reliable installation. For use with conventional systems. A choice of 32 tones including all the major international standards.



## Orbis Conventional Manual Call Point

SC2900-001APO	Manual Call Point
55100-003APO	Manual Call Point - Outdoor, without LED
44251-189APO	Transparent MCP Cover

The Manual Call Point is used to manually initiate an alarm signal on the fire detection system. EN 54-11 Certified.



## Orbis Conventional Reflective Beam Detector Head - Add-On

29650-070  
Additional Head for the Auto-Aligning Beam Detector. The Conventional Auto-Aligning Beam Detector is a compact detector for detecting smoke in large open areas.



## Orbis Conventional 6" Fire Bell

29600-400  
The Conventional 6" Fire Bell is a motorised bell designed for fire alarm applications. Its low current consumption and universally recognisable alarm sound make it an ideal choice for many alarm systems. Designed for ease of installation, it features a robust steel gong.





# CONVENTIONAL FIRE DEVICES

## Orbis Conventional I.S. Galvanic Barrier

29600-378

The Conventional I.S. Galvanic Barrier is available in the XP95 I.S. range and the Orbis I.S. range. It can be installed in safe areas and ensures system integrity. Enables compliance with the ATEX directive.



## Orbis Conventional Din Rail Interface Enclosure

29600-240

DIN-Rail Interface Enclosures are available in two sizes and can be used for housing intrinsically safe (I.S.) barriers or DIN-Rail mounted interfaces. A multi-purpose label that features a section for use with IS systems is supplied. For non-IS systems, the part referring to IS can simply be removed



## Orbis Conventional Duct Detector Housing

53546-021APO

Series 65

53546-023APO

The Duct Detector Housing provides early detection of smoke in the air moving through heating and ventilation (HVAC) ducts in commercial and industrial premises. Its purpose is to prevent the re-circulation of smoke from an area on fire to areas unaffected by the fire when used with a Series 65 or Orbis detector.



## Orbis Marine Conventional Multi-Sensor Detector

ORB-OH-43001-MAR

Detector

ORB-OH-43003-MAR

Detector with Flashing LED

The Orbis Marine Multi-Sensor Detector benefits from the same false alarm reduction technology as the optical detector, with the addition of a heat-sensing element. Sensing chamber keeps out dust and other airborne contaminants. Flashing LED option.



## Orbis Marine Conventional Optical Smoke Detector

ORB-OP-42001-MAR

ORB-OP-42003-MAR

Flashing LED

The Orbis Marine Optical Smoke Detector operates on the well-established light scatter principle. However, the sensing technology is radically different in design from previous optical detectors and significantly reduces false alarms.



## Orbis Marine Conventional Heat Detector

ORB-HT-41001-MAR

A1R Heat Detector

ORB-HT-41013-MAR

A1R Heat Detector with Flashing LED

ORB-HT-41002-MAR

AS2 Heat Detector

ORB-HT-41014-MAR

AS2 Heat Detector with Flashing LED

ORB-HT-41003-MAR

BR Heat Detector

ORB-HT-41015-MAR

BR Heat Detector with Flashing LED

ORB-HT-41004-MAR

BS Heat Detector

ORB-HT-41016-MAR

BS Heat Detector with Flashing LED

ORB-HT-41005-MAR

CR Heat Detector

ORB-HT-41017-MAR

CR Heat Detector with Flashing LED

ORB-HT-41006-MAR

CS Heat Detector

ORB-HT-41018-MAR

CS Heat Detector with Flashing LED

The Orbis Marine Heat Detectors monitor temperature by using a single thermistor which provides a voltage output proportional to the external air temperature. Can be used for applications where smoke detectors are unsuitable. Ideal in environments that are dirty or smoky under normal conditions.



# CONVENTIONAL FIRE DEVICES

## Orbis Marine Conventional Base

ORB-MB-00001-MAR	TimeSaver Base
ORB-RB-40004-MAR	TimeSaver Relay Base
ORB-MB-50018-APO	I.S TimeSaver Base
45681-200MAR	Series 65 Mounting Base

The Orbis Marine Base is a design that provides installers with an open working area with fixing holes shaped to allow a fast mounting procedure. Grouped terminals to make wiring easy. Two fixing centres. LED alignment mark. Cable stripping guide. Detector locking mechanism.



## Orbis Marine Conventional Manual Call Point

55100-021MAR	Manual Call Point
55100-022MAR	Manual Call Point - Waterproof
44251-189APO	Transparent MCP Cover

The Manual Call Point is used to manually initiate an alarm signal on the fire detection system. EN 54-11 Certified.



## Orbis Marine Conventional I.S. Multi-Sensor Detector

ORB-OH-53027-APO	Detector
ORB-OH-53028-APO	Detector with Flashing LED

The Orbis Marine I.S. Multi-Sensor Detector benefits from the same false alarm reduction technology as the optical detector, with the addition of a heat-sensing element. Sensing chamber keeps out dust and other airborne contaminants. Flashing LED option.



## Orbis Marine Conventional I.S. Optical Smoke Detector

ORB-OP-52027-APO	
ORB-OP-52027-APO	Flashing LED

The Orbis Marine I.S. Optical Smoke Detector operates on the well-established light scatter principle. However, the sensing technology is radically different in design from previous optical detectors and significantly reduces false alarms.



## Orbis Marine Conventional I.S. Heat Detector

ORB-HT-51146-APO	A1R Heat Detector with Flashing LED
ORB-HT-51148-APO	AS2 Heat Detector with Flashing LED
ORB-HT-51150-APO	BR Heat Detector with Flashing LED
ORB-HT-51152-APO	BS Heat Detector with Flashing LED
ORB-HT-51156-APO	CS Heat Detector with Flashing LED

The Orbis Marine I.S. Heat Detectors monitor temperature by using a single thermistor which provides a voltage output proportional to the external air temperature. Can be used for applications where smoke detectors are unsuitable. Ideal in environments that are dirty or smoky under normal conditions.



## Orbis Marine Conventional I.S. Manual Call Point

55100-031APO	Indoor, without LED
55100-033APO	Outdoor, without LED
44251-189APO	Transparent MCP Cover

The Manual Call Point is used to manually initiate an alarm signal on the fire detection system. The Conventional I.S. Manual Call Point is suitable for use in areas where explosive atmospheres are, or may be, present.



**Orbis Marine Series 65 UV Flame Detector - Base Mounted**  
55000-026APO

The Orbis Marine Series 65 Flame Detector (UV) is designed to protect enclosed indoor areas where open flaming fires may be expected. The detector has a fast-acting response to flames up to 25m away and is equipped with a single UV sensor with a narrow spectral response in order to discriminate between flames and most spurious sources of radiation.



# series 65<sup>®</sup>

- Can be used on security systems
- Proven detection performance
- Designed to meet approvals worldwide

**Series 65 Optical Smoke Detector**  
55000-317APO

The Series 65 Optical Smoke Detector uses light-sensing technology to “see” smoke entering the chamber. The external detector moulding is identical to that of the ionisation detector and has an indicator LED that is clear in quiescent state and produces a red light in alarm.



**Series 65 Heat Detector**

- |              |                                     |
|--------------|-------------------------------------|
| 55000-121APO | A1R Heat Detector with Flashing LED |
| 55000-122APO | A1R Heat Detector                   |
| 55000-127APO | BR Heat Detector                    |
| 55000-132APO | CR Heat Detector                    |

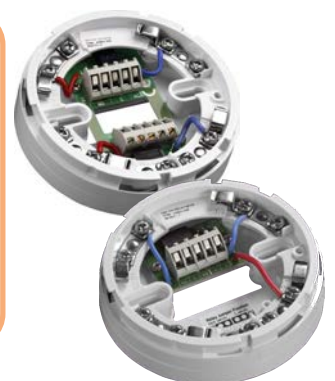
The Series 65 Heat Detector monitors temperature by using a dual thermistor network which provides a voltage output proportional to the external air temperature. Can be used for applications where smoke detectors are unsuitable. Ideal for environments that are dirty or smoky under natural conditions. Wide operating voltage.



**Series 65 Base**

- |              |                          |
|--------------|--------------------------|
| 45681-200APO | Base                     |
| 45681-245APO | Relay Base               |
| 45681-508APO | Relay Base - 12V         |
| 45681-248APO | Relay Base - End of Line |

The Series 65 Base has been designed to enable detectors to be fitted without the need for force – particularly useful when fitting to suspended ceilings. All Series 65 bases have a one-way-only fit. Detectors can be locked into place by a grub screw using a 1.5mm hexagonal screwdriver.



**Series 65 UV Flame Detector - Base Mounted**  
55000-025APO

The Series 65 Flame Detector (UV) is designed to protect enclosed indoor areas where open flaming fires may be expected. The detector has a fast-acting response to flames up to 25m away and is equipped with a single UV sensor with a narrow spectral response in order to discriminate between flames and most spurious sources of radiation.



# CONVENTIONAL FIRE DEVICES

## eurotech<sup>®</sup> FIRE SYSTEMS LIMITED

The Eurotech conventional field device series consists of detection, control and alarm devices to build a comprehensive, robust fire alarm system.

### EURVC-P Conventional Optical Smoke Detector 100-2210V

The optical detector has been designed with a unique symmetrical chamber. The chamber ensures optimum air entry from all directions and offers immunity to ambient light into the detectors. A drift compensation algorithm maintains alarm sensitivity thresholds effectively extending time between maintenance periods.



### EURVC-H Conventional Heat Detector 100-2505V

These detectors are designed for open area protection and provide the best warning of fire in locations that are not suitable for smoke detection technologies. A centrally positioned LED indicator provides 360° visibility of detector activation and an in-built magnet test feature allows easy activation to verify operation of the detectors. A selection of connection bases makes the unit compatible with most conventional control equipment.



### EURVC Conventional Base 100-3500V 100-3501V Diode Base

Conventional detector low profile mounting base. Secure and reliable cable termination. The Base does not provide line continuity during detector removal. A useful terminal provides remote indicator output, & accepts 2.5mm cables.



### EURVC-S Conventional Wall Mounted Sounder 100-3801V Red CWS100/W White

The Wall Mounted Sounder forms the core of our ENS4-23 Visual Alarm Device Range. The unit has a built-in microphone which allows the unit to indicate a fault should the sounder not operate when activated or tested.



### EURVC-SB Conventional Wall Mounted Sounder/Beacon 100-3800V Red CWS100-AV/W White

The EURVC-SB Conventional Wall Sounder VAD can either be used as a standalone conventional device or as an intelligent unit by the addition of a wired module or wireless module. All devices are weatherproof. The unit is equipped with 3 levels of volume adjustment, high output LED beacon and 32 recognised tones.



### Conventional Sycall Manual Call Point - Surface Mounted SY-RS01 CI Integral Cover for STI Call Point

The Sycall Reset-Glow series of resettable manual call points mimics the feel of breaking glass whilst offering the user benefits and environmental advantages of a resettable operating element. Internal and weatherproof units are available and all variants can be easily identified by an alarm flag that rises into view upon activation.



# CONVENTIONAL FIRE DEVICES



## **EVSO-32EUR 24v 32 Tone Sounder Base**

507-001EUR Sounder Base  
509-003EUR Sounder Beacon Base

The VSO base sounder is designed to work with a variety of detector brands to provide a cost-effective sounder solution. As standard, the VSO comes with 32 sounder tones with a two-stage alarm override which is activated by a third negative wire from the panel. Suitable for conventional and two-wire (SAV-WIRE) fire alarm systems.



## **EVTG-32E Eurotech 24v 32 Tone Sounder**

510-017EUR Red with Shallow Base  
510-019EUR Red with Deep Base

The VTG family of sounders has been designed for use with conventional fire alarm systems including two-wire (SAV-WIRE) installations. As standard, the VTG comes with 32 sounder tones with a two-stage alarm override which is activated by a third negative wire from the panel.



## **EVTB-32E-SB Eurotech EN54-3 Approved Sounder Beacon**

511-095LEUR Red with Shallow Base  
511-096LEUR White with Shallow Base  
511-097LEUR Red with Deep Base

The VTG family of sounders has been designed for use with conventional fire alarm systems including two-wire (SAV-WIRE) installations. As standard, the VTG comes with 32 sounder tones with a two-stage alarm override which is activated by a third negative wire from the panel.



## **VSL-32-C 24v 32 Tone Platform Sounder with LED Ring**

509-001

The VSL base sounder beacon is for use with conventional fire alarm systems, including two-wire (SAV-WIRE®). It is designed to accept most leading detector bases and offers a cost-effective solution for sounder and beacon installation.



## **Beacon Base**

509-033 Clear Lens, Red Flash

Designed for use with the VSO platform sounder to provide a combined platform sounder/visual indicator.



## **VXB LED 24v Beacon 24v**

512-001 Red Body, Red Lens, Shallow Base

The VXB 24Vdc LED beacon is part of the VTG family of products designed for use with conventional fire alarm systems, including two wire (SAV-WIRE®) and other general 24Vdc applications. The beacon has been designed for maximum all-round visibility, coupled with low power consumption, utilising an array of energy-efficient LEDs.

# CONVENTIONAL FIRE DEVICES



Hochiki's conventional range of automatic fire detection and alarm equipment is designed and manufactured to the highest international standards.

This extensive range of products simplifies installation, minimises cost and allows seamless integration. Specified in many prestigious buildings, Hochiki's conventional range of products is the premier choice for system designers.



## Conventional Photoelectric Smoke Detector

SOC-E3N(BLK)      Black  
SOC-E3N(WHT)      White

The SOC-E3N is a Photoelectric Smoke Detector, which is fully compatible with the majority of existing Conventional systems. The smoke detector incorporates Hochiki's unique High Performance photoelectric smoke chamber removing the need to use Ionisation Detectors in the majority of applications.



## Intrinsically Safe Heat Detector

DCD-1E-IS(WHT)      White

The DCD-1E-IS(WHT) is an Intrinsically Safe Conventional Rate of Rise Heat Detector with a 60-degree fixed temperature element designed for installation in hazardous areas.



## Conventional Rate of Rise Heat Detector

DCD-AE3(WHT)      White

DCD-AE3 is a Rate of Rise Heat Detector with a 60 °C fixed temperature element using a thermistor and linearising circuit to provide an accurate linear response Heat Detector.



## Conventional Detector Base

YBN-R/6(BLK)      Black  
YBN-R/6(WHT)      White

Model YBN-R/6 is fully compatible with the majority of existing conventional fire alarm control panels. It is supplied with square cable clamps for secure and reliable cable termination. The integrated third terminal provides remote indicator output.



## Conventional Schottky Diode Base

YBN-R/6SK(WHT)      White

YBN-R/6SK(WHT) is a Conventional Detector Mounting Base with in-line Schottky Diode, associated with the CDX Range of Detectors and is fully compatible with the majority of existing conventional fire alarm control panels.



## Intrinsically Safe Mounting Base

YBN-R/4IS(WHT)      White

YBN-R/4IS(WHT) is a Conventional Detector Mounting Base associated with the CDX Range of Intrinsically Safe Detectors and is fully compatible with the majority of existing conventional fire alarm control panels.



## Conventional Sounder Beacon Base

CSBB-E(WHT)      White

The CSBB-E(WHT) is a platform-type sounder beacon, which will accept the CDX range of detectors mounted with an appropriate base. The improved electronics result in a very low current consumption with a high sound output.

# CONVENTIONAL FIRE DEVICES

## NITTAN

Nittan was established in 1972 in the UK and has grown to become a major force in the EMEA fire protection industry.

With the extensive support facilities of our Tokyo parent company, Nittan Europe now supplies in excess of 500,000 detectors per year, all of which are made to marine standard for exceptional quality.



### EURVC-P Conventional Optical Smoke Detector

**100-2210**

The EURVC-P Conventional Optical Detector incorporates a chamber housing an Infra Red (IR) LED light and a photodiode light detector. The EVC-P Optical Detector is more sensitive to larger smoke particles which tend to be caused by smoldering fires rather than fast flaming fires.



### ST-P-OM Conventional Optical Smoke Detector

**F02C82220**

Using a simple but effective technique, the ST-P-OM Optical Detector incorporates a chamber housing an Infra-Red (IR) LED light and a photodiode light detector set at an obtuse angle preventing it from seeing the light.



### EVC-PY-IS Conventional Intrinsically Safe Optical Detector

**F02N83300**

Using the latest generation of Nittan smoke sensing chambers, with enhanced sensitivity to Black smoke, combined with ATEX approval the EVC-PY-IS is suitable for use in Intrinsically Safe environments.



### EURVC-H-CS Conventional Heat Detector

**100-2507**

Unlike smoke detectors that detect the presence of smoke particles, heat detectors only react to changes in temperature. The EURVC-H-CS is a Thermistor based Heat Detector, which uses electronic components that change their resistance when heated.



### EURV-H-CS Intelligent Heat Detector 92 Deg C

**100-2201**

The EURV-H-CS is a Thermistor based Heat Detector, which use electronic components that change their resistance when heated; this change is detected by circuitry within the detector.



### Conventional Detector Base

**100-3500**

**EURB-4 Universal Base**

**Y100-3510**

**EURB-4SD Standard Diode Base**

Universal Mounting base standardised across entire Nittan range. The EURB-4SD is a detector mounting base with Schottky diode for use with EV conventional detectors.

# CONVENTIONAL FIRE DEVICES



## Conventional IP55 EV/AS Base

F16N81373

For use in damp areas where water ingress will compromise loop communications, and detector functionality. When used with its deckhead backbox and cable glands this base is Ingress Protected to IP55.



## EVC-IR Dual Band IR Flame

F04J60044

The EVC-IR uses both Dual Wavelength and flicker frequency sensing techniques for maximum false alarm reduction and sensitivity to real flaming fires.

# VIMPEX

At the core of VimpeX is the design, manufacture and distribution of trusted and affordable fire alarm, signalling and evacuation products.

The broad range of fire alarm and evacuation products represent the most resilient, dependable and aesthetically-pleasing solutions available.



## Banshee Excel CH Sounder

902CHA6AO Red

The Banshee Excel™ CH sounder comes with 32 user-selectable tones incorporating low frequencies, high frequencies, European, American and Australian norms and all industry-standard frequency patterns.



## Banshee Excel Sounder Beacon with Deep Base

E-CHX1201 Amber Lens, Red Body

The Banshee Excel range represents the most modern, acoustically advanced and most versatile range of conventional electronic sounders, combined units and dedicated beacons available on the market today.



## Banshee Excel FlashDome LED Beacon

E-CHX1201 Red

The Banshee Excel™ FlashDome features ultra-efficient LEDs and is ideal for use as a supplementary indicator in alarm systems. The FlashDome is 100% compatible with the rest of the Excel Sounder and Sounder Beacon range and utilises the same shallow and deep bases and broad range of accessories.



## Mini Fire-Cryer Solo Base Mounted Sounder

FCS/C/W White

The EN 54-3 approved Fire-Cryer Solo model FCS/C is a slimline voice sounder for discrete mounting under fire detectors. Requiring no special wiring can be retrofitted to existing sounder / notification circuits. Fully synchronised it has an exceptionally low current consumption. Can be used as a replacement for electronic sounders or bells.



# CONVENTIONAL FIRE DEVICES



## Fire Cryer Plus EN54-3 Approved Voice Sounder Beacon EU/FC3/A/R/R/S Red

The Fire-Cryer® Plus requires no special wiring and can be retrofitted to existing installations. They are fully synchronised and have an exceptionally low current consumption. The units can be used as a replacement with electronic sounders or bells to broadcast a clear message for any situation - evacuation, chemical spills, access message, security or general information.



## Sycall Waterproof Conventional Call Point SYW-RS-01

The SyCall series of resettable manual call points mimics the feel of breaking glass whilst offering the user the benefits and environmental advantages of a resettable operating element. Once installed, the call point need never be opened for test or reset.



## Sav Wire Call Point 100-1012SW

The Vimplex series of resettable manual call points mimics the feel of breaking glass whilst offering the user the benefits and environmental advantages of a resettable operating element.



## Eurotech Remote Indicator 300-2011

A bright LED indicator suitable for use on both conventional and analogue addressable alarm systems. Like all Identifire products, this product is available as either flush or surface mounted. The Remote Indicator provides a visual indication that a detector has been activated where it's not visible. It is suitable for both Conventional and Analogue Addressable systems.

# Specialist Fire Products



Euro-VAC, the evacuation alert system, brings you peace of mind that your tall residential building meets the new code of practice recommendations.

Built using the industry leading Eurotech panel technology, Euro-VAC delivers proven performance, quality and ease of use.

Combining robustness and reliability with speed and simplicity, our evacuation alert system comes in a range of flexible formats with wired, wireless and hybrid options available.

## Euro-VAC



### Euro-VAC Controller

EUR-8629-08	8 evacuation zones
EUR-8629-16	16 evacuation zones
EUR-8629-24	24 evacuation zones
EUR-8629-32	32 evacuation zones
EUR-8629-08/FT	8 evacuation zones & fault-tolerant network card
EUR-8629-16/FT	16 evacuation zones & fault-tolerant network card
EUR-8629-24/FT	24 evacuation zones & fault-tolerant network card
EUR-8629-32/FT	32 evacuation zones & fault-tolerant network card
EUR-8629-00/FT	Fault-tolerant network card, no display

MXP-502	Additional Loop Card
MXM-546	Separate Battery Enclosure (45Ah) - if required
MXP-501	Remote Battery Temperature Sensor

All our Euro-VAC controllers come with 1 loop as standard, and are expandable up to 4 loops.

The Euro-VAC panel is built using industry-leading Eurotech panel technology and delivers proven performance, quality and ease of use. The panel is supplied with 8, 16, 24 or 32 firefighter evacuation alert areas as standard, and is fully expandable from 1 to 4 loops. The panel includes the latest flash-based microprocessor technology and provides a simple, 'at a glance' overview of which evacuation zones are operating. The panel has a virtual display which enables the maintenance engineer to work remotely.



### EURV-WSR-IP65 Intelligent Wall Mounted Sounder

100-2041V	Red
100-2041VW	White

Available in red (100-2041V) or white (100-2041VW). The unit has a built in microphone which allows the unit to indicate a fault should the sounder not operate when activated or tested.



### EURV-SBR-IP65 Intelligent AV Wall Mounted Sounder Beacon

100-2039V	Red
100-2039VW	White

Available in red (100-2039V) or white (100-2039VW). The unit has a built in microphone which allows the unit to indicate a fault should the sounder not operate when activated or tested.



# SPECIALIST FIRE PRODUCTS



## Handheld Programming Unit

100-8003V

The handheld programming unit (100-8003V) allows you to set and read the programmable variables of the devices in your system including the loop address. When used with the connection lead, you can program/read information from call points and sounders, add loop addresses or program one of the sounder's operating modes.



## EURV-OM-RP Single Relay Output Module - Plate Mount (no box)

100-2033V

The single channel output module is loop-powered, designed around a fully digital protocol. The output is a normally de-energised relay switched on by a command from the control panel. The unit provides a fast and secure response, and incorporates a bidirectional short circuit isolator.



## EURV-OM-RM Single Relay Output Mini Module

100-2034V

The single output module (100-2034V) is loop-powered, designed around a fully digital protocol and provides a fast and secure response. The output channel is monitored and detects open and short circuit conditions. Connections are made using plug-in terminal blocks.



## Isolator Module

EVAC-FLR-ISO

Single Floor Module

EVAC-RES-ISO

Dual Residential Module

The isolator module is a device designed to provide short circuit isolation features for Euro-VAC loops carrying Eurotech devices.

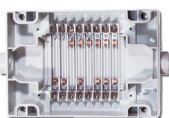
It operates with Euro-VAC control panel protocol which provides for high rates of information exchange in combination with particular features that ensure fast and secure responses.

# SPECIALIST FIRE PRODUCTS



BETTER SOLUTIONS IN FIRE PROTECTION

WAGNER has been developing its own aspirating smoke detectors since 1997. The TITANUS® family features unparalleled detection quality and safety against false alarms—when it comes to aspirating smoke detectors choose WAGNER



## Device Base TITANUS MICRO-SENS AD-05-3500

The Wagner AD-05-3500 is a device which is used to house the Wagner Titanus MicroSens aspirating smoke detector.



## Detection Unit TITANUS MICRO-SENS

- AD-05-4000      Basic Device
- AD-05-4300      Basic Device
- AD-05-4020      Bar Graph
- AD-05-4320      Bar Graph
- AD-05-4010      Room Ident
- AD-05-4310      Room Ident
- AD-05-4355      Room Ident S1
- AD-99-0310      Basic Air Sampling Detection Unit

WAGNER's smallest air sampling smoke detector, the TITANUS MICRO-SENS, is designed for small to medium-sized areas up to 400 m<sup>2</sup> in size. This economical air sampling smoke detector is ideal for use in hotel rooms, offices, and prison cells. The optional ROOM-IDENT feature can localise fires within up to five rooms.

## ADDITIONAL MICRO-SENS PRODUCTS

CODE	PRODUCT DESCRIPTION
AD-05-5200	Housing Unit
09-20-6680	Relay Unit
AD-10-1400	Front film sheet TITANUS MICRO-SENS
AD-10-1410	Front film sheet TITANUS MICRO-SENS
AD-10-1420	Front film sheet TITANUS MICRO-SENS

# SPECIALIST FIRE PRODUCTS



## Basic Device TITANUS PRO·SENS

- AD-05-0457 1 Alarm per Detector
- AD-05-0458 SILENT 1 alarm per detector

The universal TITANUS PRO·SENS® is WAGNER's best-selling air sampling smoke detector. Depending on the situation, the one or two detector modules (each with a one-stage alarm) can be set to sensitivity levels as high as 0.015 % obs./m on their primary alarms. The highly modular air sampling smoke detection system offers solutions for both simple and highly specialised areas of application.



## Detector Module for PRO·SENS & SILENT

- AD-10-5100 ProSens Detector 0.1%
- AD-10-5130 ProSens Detector 0.5%
- AD-10-5115 ProSens Detector 0.015%

TITANUS PRO·SENS® aspirating smoke detection system combines High-Power-Light-Source (HPLS) technology with patented LOGIC·SENS fire pattern recognition algorithms and a large portfolio of custom accessories to ensure that each system will maintain high levels of sensitivity and false alarm immunity even in challenging environments.



## Basic Device TITANUS PRO·SENS FREEZE

- AD-05-0467 1 Alarm per Detector

The universal TITANUS PRO·SENS® is WAGNER's best-selling air sampling smoke detector. Depending on the situation, the one or two detector modules (each with a one-stage alarm) can be set to sensitivity levels as high as 0.015 % obs./m on their primary alarms. The highly modular air sampling smoke detection system offers solutions for both simple and highly specialised areas of application.



## Detector Module for PRO·SENS FREEZE

- AD-10-5190 ProSens -40°C Detector 0.1%
- AD-10-5195 ProSens -40°C Detector 0.015%
- AD-10-5200 ProSens -40°C Detector 0.5%

TITANUS PRO·SENS® aspirating smoke detection system combines High-Power-Light-Source (HPLS) technology with patented LOGIC·SENS fire pattern recognition algorithms and a large portfolio of custom accessories to ensure that each system will maintain high levels of sensitivity and false alarm immunity even in challenging environments.

## ADDITIONAL PRO·SENS PRODUCTS

CODE	PRODUCT DESCRIPTION
AD-10-1035	Front Film TP-1 for 1 detector, Wagner Logo
AD-10-1037	Front Film TP-2 for 2 detectors, Wagner Logo

# SPECIALIST FIRE PRODUCTS



## Basic Device PRO·SENS/net

- AD-05-0462 2 alarms per detector (Pre Alarm & Main Alarm)
- AD-05-0665 3 alarms per detector (Info Alarm, Pre Alarm & Main Alarm)

TITANUS PRO·SENS® /net is WAGNER's universal air sampling smoke detector for monitoring large areas of up to 6,000 m<sup>2</sup>.

By combining cutting-edge HPLS light technology with the patented LOGIC·SENS® smoke development pattern recognition, TITANUS PRO·SENS® /net provides maximum sensitivity and immunity to false alarms at the same time, even under tough conditions.



## Detector Module TT for PRO.SENS/net & SILENT

- AD-10-5210 Pro·Sens/net & SILENT Detector 0.1%
- AD-10-5230 Pro·Sens/net & SILENT Detector 0.5%
- AD-10-5250 Pro·Sens/net & SILENT Detector 0.015%

TITANUS PRO·SENS® aspirating smoke detection system combines High-Power-Light-Source (HPLS) technology with patented LOGIC·SENS fire pattern recognition algorithms and a large portfolio of custom accessories to ensure that each system will maintain high levels of sensitivity and false alarm immunity even in challenging environments.

## ADDITIONAL PRODUCTS

CODE	PRODUCT DESCRIPTION
09-20-6445	Network card TITANUS PRO·SENS/TOP·SENS + Datalogger f. TP/net
AD-10-1076	Front Film TP-4 for 1 detector 2 alarms. Wagner Logo.
AD-10-1077	Front Film TP-4 for 2 detector each 2 alarms. Wagner Logo.
AD-10-1165	Front Film TP-5 for 1 detector each 3 alarms. Wagner Logo
AD-10-1169	Front Film TP-5 for 2 detector each 3 alarms. Wagner Logo.



## Basic Device TOP·SENS

- AD-05-1220 3 alarms & bargraph per detector

TITANUS TOP·SENS® aspirating smoke detection system combines High-Power-Light-Source (HPLS) technology with patented LOGIC·SENSTM fire pattern recognition algorithms and a large portfolio of custom accessories to ensure that each system will maintain high levels of sensitivity and false alarm immunity even in challenging environments.

## ADDITIONAL TOP·SENS PRODUCTS

CODE	PRODUCT DESCRIPTION
AD-10-1205	Front Film TT-1 for 1 detector, Wagner Logo
AD-10-1210	Front Film TT-2 for 2 detectors, Wagner Logo

# SPECIALIST FIRE PRODUCTS



## TITANUS RACK-SENS Modules

AD-05-4700	1U - 0.50%/m sensitivity
AD-05-4705	1U - 0.10%/m sensitivity
AD-05-4710	2U - 0.50%/m sensitivity c/w Novec 1230 extinguishant
AD-05-4715	2U - 0.10%/m sensitivity c/w Novec 1230 extinguishant
AD-05-4840	NOVEC Extension Cylinder for 2U RACK-SENS

The TITANUS RACK-SENS® is WAGNER's earliest possible fire detection and extinguishing system for server racks and control cabinets – ultra compact, for maximum protection! The fire detection unit can also be expanded to include fire suppression using either integrated or externally attached extinguishing gas cylinders.

## ADDITIONAL RACK-SENS DETECTORS

CODE	PRODUCT DESCRIPTION
AD-05-4815	Additional Detector for TITANUS RACK-SENS 0.50%/m sensitivity
AD-05-4816	Additional Detector for TITANUS RACK-SENS 0.10%/m sensitivity

## ADDITIONAL RACK-SENS PRODUCTS

CODE	PRODUCT DESCRIPTION
AD-05-4820	Bargraph
AD-05-4810	Temperature Module
AD-05-4800	Mains Supply
AD-05-5025	Door contact
AD-05-5035	Temperature Sensor
AD-05-5000	Extinguishing / shut-down module
AD-05-5060	Horizontal Extinguishant Extension Pipe
AD-05-2000	Response Alarm Indicator





# SPECIALIST FIRE PRODUCTS

## WAGNER PIPE & FITTINGS

PRODUCT DESCRIPTION	RED	WHITE	GREY
25mm Sampling Pipe (25 x 2.4mtr length)	UK-99-2024	UK-99-2124	UK-99-2224
T Piece (10 pack)	01-10-9045	01-10-9046	01-10-9022
45° Bend (10 pack)	01-10-9237	01-10-9236	01-10-9023
25mm Coupler (10 pack)	01-10-9281	01-10-9249	01-10-9060
90° Elbow (10 pack)	01-10-9280	01-10-9278	01-10-9020
90° Swept Bend (10 pack)	01-10-9276	01-10-9277	01-10-9070
25mm Pipe Clips (10 pack)	01-10-9780	01-10-9757	01-10-9024
25mm End Cap (10 pack)	01-10-9215	01-10-9216	01-10-9050
25mm Socket Unions (single)	01-10-9247	01-10-9248	01-10-9025
3/4" Reducing coupler (single)	01-10-9066	N/A	N/A
25mm Expansion Couplers - 70mm of expansion (single)	01-10-9250	N/A	N/A
25mm 1 metre flexible joint - larger than 70mm of expansion (single)	01-10-9784	N/A	N/A
25mm 1 metre flexible joint - larger than 70mm of expansion (single)	01-10-9785	N/A	N/A

## ADDITIONAL PIPE PRODUCTS

CODE	PRODUCT DESCRIPTION
UK-10-9300	ABS Pipe Cement (Estimated 170 joints per pot)
UK-10-9301	25mm ABS Pipe Cutters
AD-10-1960	Air Filter Assy c/w Filter Elements
W2-10-1360	Air Flow Reducer
01-10-8020	Air Sampling System Test Point
01-10-9245	Pipe Adapter - for 1 pipe into 2 detectors
AD-10-1980	Sound Absorber/Muffler Unit
AD-10-0647	Steam Trap
UK-99-9400	Sampling Capillary Point (discreet, rear fixing) c/w 1 metre flexible tube and 25mm red "T"
UK-99-9500	Sampling Capillary Point (large, front fixing) c/w 1 metre flexible tube and 25mm red "T"
UK-99-9070	Manual Blow Through Valve Set Complete - for normal areas PVC (0.c to +60.c)
UK-99-9080	Manual Blow Through Valve Set Complete - for deep freeze areas ABS (-40.c to +80.c)
01-10-9380	Non Return End Cap - for blow through systems
AD-10-0915	3 Way Ball Valve - for cleaning pipe
01-10-9370	Ceiling Capillary Point (Single)

# SPECIALIST FIRE PRODUCTS



## WAGNER Extension Kits

AD-05-0530

For IP52 Rating

AD-05-0540

Against dust damage

Designed for use with Wagner's range of standard aspirating systems.

## VSK VALVES & FITTINGS

CODE	PRODUCT DESCRIPTION
AD-10-0560	Valve Control VSK
AD-10-0940	Shut-off Valve with Pilot Valve/Fittings VSK (Non-Freezer Version)
AD-10-0945	Shut-off Valve with Pilot Valve/Fittings VSK (Freezer Version)
AD-10-0950	Compressed Air Valve including Fittings VSK (Non-Freezer Version)
AD-10-0955	Compressed Air Valve including Fittings VSK (Freezer Version)
AD-10-0880	Quick Acting Coupling Sleeve - Plastic VSK
UK-10-0881	Quick Acting Coupling Sleeve - Metal VSK
AD-10-0480	Front Film Sheet for Valve Control VSK 1
AD-10-0395	Front Film Sheet for Valve Control VSK 2

## MICRO-CONTROLLERS FOR VALVE CONTROL

CODE	PRODUCT DESCRIPTION
AD-10-1095	1 x 10s on low airflow fault only VSK
AD-10-1105	1 x 10s every 24h and on low airflow fault VSK
AD-10-1135	1 x 10s every 1h and on low airflow fault VSK
AD-10-1145	1 x 10s every 3h and on low airflow fault VSK
AD-10-1155	1 x 20s every 24h and on low airflow fault VSK
AD-10-1115	3 x 5s on low airflow fault only VSK
AD-10-1125	3 x 5s every 24h and on low airflow fault VSK

## PISTON COMPRESSORS

CODE	PRODUCT DESCRIPTION
UK-10-9100	2 HP Portable Piston Compressor with 24 Litre Receiver
UK-10-9102	Hose/Nozzle for 2 HP Portable Piston Compressor with 24 Litre Receiver
UK-10-9101	3 HP Piston Compressor with 200 Litre Receiver
UK-10-9103	5mtr Compressed Hose Assembly for use with UK-10-9101

# SPECIALIST FIRE PRODUCTS



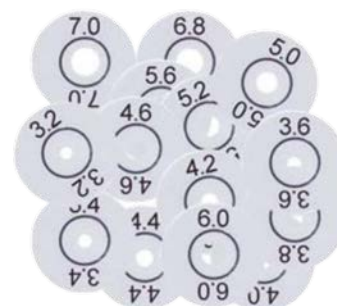
## DETONATION PREVENTION DEVICES

- 01-10-7051 Type EG IIA (requires 1 x 01-10-9016)
- 01-10-7061 Type EG IIB (requires 1 x 01-10-9016)
- 01-10-7071 Type EG IIC (requires 1 x 01-10-9016)
- 01-10-9016 Steel Air Sampling Pipe with Screw Joint

Designed for use with Wagner's range of standard aspirating systems.

## ASPIRATION REDUCING FILM SHEET

PRODUCT DESCRIPTION	BLACK TEXT	WHITE TEXT
Aspiration-reducing film sheet 2.0 mm	01-10-9390	01-10-9790
Aspiration-reducing film sheet 2.5 mm	01-10-9395	01-10-9795
Aspiration-reducing film sheet 3.0 mm	01-10-9400	01-10-9800
Aspiration-reducing film sheet 3.2 mm	01-10-9410	01-10-9810
Aspiration-reducing film sheet 3.4 mm	01-10-9420	01-10-9820
Aspiration-reducing film sheet 3.6 mm	01-10-9430	01-10-9830
Aspiration-reducing film sheet 3.8 mm	01-10-9440	01-10-9840
Aspiration-reducing film sheet 4.0 mm	01-10-9450	01-10-9850
Aspiration-reducing film sheet 4.2 mm	01-10-9460	01-10-9860
Aspiration-reducing film sheet 4.4 mm	01-10-9470	01-10-9870
Aspiration-reducing film sheet 4.6 mm	01-10-9480	01-10-9880
Aspiration-reducing film sheet 5.0 mm	01-10-9490	01-10-9890
Aspiration-reducing film sheet 5.2 mm	01-10-9500	01-10-9900
Aspiration-reducing film sheet 5.6 mm	01-10-9510	01-10-9910
Aspiration-reducing film sheet 6.0 mm	01-10-9520	01-10-9920
Aspiration-reducing film sheet 6.8 mm	01-10-9530	01-10-9930
Aspiration-reducing film sheet 7.0 mm	01-10-9540	01-10-9940
Marking tape for aspiration-reducing film	01-10-9330	



## AIR FLOW REDUCER FOR DEEP FREEZE STORAGE AREA

- |            |  |            |       |
|------------|--|------------|-------|
| 01-10-9580 | 2.0mm  | 01-10-9670 | 4.4mm |
| 01-10-9590 | 2.5mm  | 01-10-9680 | 4.6mm |
| 01-10-9600 | 3.0mm  | 01-10-9690 | 5.0mm |
| 01-10-9610 | 3.2mm  | 01-10-9700 | 5.2mm |
| 01-10-9620 | 3.4mm  | 01-10-9710 | 5.6mm |
| 01-10-9630 | 3.6mm  | 01-10-9720 | 6.0mm |
| 01-10-9640 | 3.8mm  | 01-10-9730 | 6.8mm |
| 01-10-9650 | 4.0mm  | 01-10-9740 | 7.0mm |
| 01-10-9660 | 4.2mm  |            |       |
| 01-10-9750 | Plastic Clip for Air Flow Reducers - Deep Freeze |            |       |



# SPECIALIST FIRE PRODUCTS

## ADDITIONAL WAGNER TITANUS PRODUCTS

CODE	PRODUCT DESCRIPTION
UK-10-0015	1.5 Amp EN54 PSU (takes either 2 x 7Ah or 2 x 12v 12Ah)
UK-10-0800	12v 7Ah Battery (2 needed per PSU)
UK-10-0809	12v 12Ah Battery (2 needed per PSU)
AD-05-0566	Diagnostic Tool
UK-10-0590	Smoke Pen
UK-10-0597	Replacement Smoke Sticks for Smoke Pen (3 pack)
AD-05-0597	Replacement Smoke Sticks for Smoke Pen (6 pack)
AD-10-0330	Filter Element f. LF-AD (/a) 15 µm
AD-05-3580	MicroSens Inlet Filters
AD-10-2010	Special Fine Filter - 1 µm - for use with TITANUS MICRO•SENS
AD-10-1930	Filter Element for Special Fine Filter SF-400 1 µm
AD-10-2000	Special Fine Filter - 1 µm - for use with TITANUS PRO SENS
AD-10-1920	Filter Element for Special Fine Filter SF-650 1 µm

# CAVIUS™

Since 2004 Cavius have inspired the World of alarms, protected homes and saved lives.

In 2010, they introduced the world's smallest photoelectric smoke alarm, using the experience from the travel alarm. The new smoke alarm was unique because of the EN-approved micro-design and special features.

WIRELESS.  
ALARM FAMILY



### Cavius RS Smoke Alarm CV2106

Optical smoke alarm device with wireless interlink. Designed for installation in private homes, camping trailers, mobile homes and caravans. This alarm can be connected with other alarms from the CAVIUS Wireless alarm family or function as a stand alone alarm. The alarm makes an optical reading every 8 seconds. At unusual readings (going into alarm stage), the readings are taken every 2 seconds.



### Cavius RF Mains Powered Smoke Alarm CV2208

Mains powered smoke alarm device with wireless interlink and battery back-up. Designed for installation in private homes. The alarm can be mounted on top of a conduit box or on the ceiling with the enclosed base. Top cover designed for easy to access vacuum cleaner nozzle. The alarm makes an optical reading every 8 seconds. At unusual readings (going into alarm stage), the readings are taken every 2 seconds.

# SPECIALIST FIRE PRODUCTS



## Cavius RF Heat Alarm CV3106

Thermal heat alarm device with wireless interlink. Designed for installation in private homes or garages with risk for smoky, dusty or humid environment, as for example kitchen and garage area. This alarm can be connected with other alarms from the CAVIUS Wireless alarm family or function as a stand alone alarm. The alarm makes an optical reading every 8 seconds. At unusual readings (going into alarm stage), the readings are taken every 2 seconds.



## Cavius RF Mains Powered Heat Alarm CV3202

Mains powered thermal heat alarm device with wireless interlink and battery back-up. Designed for installation in private homes or garages with risk for smoky, dusty or humid environment, as for example kitchen and garage area. This alarm can be connected with other alarms from the CAVIUS Wireless alarm family or function as a stand alone alarm. Placed max 5,3 meters away from any heating source. The alarm makes a reading every 2 seconds.



## Cavius CO Alarm CV4002

Carbon monoxide alarm device. Designed for installation in private homes, camping trailers, mobile homes and caravans. The alarm will make a CO sensor reading every 30 seconds if the concentration is less than 200ppm. At 200ppm or higher the readings will be made every 10 seconds.



## Cavius Smart Remote CV9001

Smart remote with emergency light. Designed to alert with a rapid flashing warning light, vibration and buzzing when alarming and to remote control the CAVIUS Wireless alarms Family. Torch function to find escape routes at night. The alarm conditions is indicated by a stroboscopic flashlight. A normal flashlight can also be activated by pressing the side button. Flashlight will flash at 2 Hertz (2 times each second) to avoid photo sensitive epilepsy to be triggered.



## Cavius RF Relay Interface CV9004

Enables a connection between an external system or between devices and the CAVIUS wireless family. Designed to connect external devices in a property such as telecare / warden control call systems, sprinkler systems, fire panels, strobes, and external sounders, etc. This can enable essential and lifesaving connections to be made and provide protection and safety to vulnerable occupants when faced with a fire hazard in the property. When a fire event is detected in a property, the relay interface unit allows connected external devices to be activated.

## PA/VA Systems

Public Address & Voice Alarm (PAVA) systems are installed in commercial buildings to provide occupants with clear and concise messaging, either in relation to day to day activities or in the event of an emergency when occupants need to safely evacuate the premises.

Eurotech provide a range of PA/VA products including voice alarms, fire telephones, disabled toilet alarms and disabled refuge emergency voice communication systems.

For more information, please contact your Regional Sales Manager.



# Non-Fire Products

---



Quantec is a powerful yet easy-to-use addressable call system that helps ensure vital communication in any building. In environments where efficiency is paramount, Quantec delivers, saving staff time, minimising disturbance and improving the quality of patient, customer and employee care. Ideal for nursecall, dementia, staff protection, emergency assistance or affray applications, Quantec includes a host of individually programmable call points, displays, ceiling pulls, overdoor lights, monitoring points, infrared transmitters and more.



## Quantec Radio Receiver

### QT422RX

Designed for use with Quantec's QT412 & QT432 range of infrared/radio transmitters and pendants. Operates at radio frequency (RF) 868.3 MHz. Allows standard, help required, emergency and/or attack calls to be generated from external areas such as car parks, loading bays, etc.



## Quantec Controller

### QT601-2

Supplies power to and controls a Quantec Addressable Call System. Monitors all network devices and manages the routing and distribution of all calls. Provides connections for network wiring, standby batteries, a laptop (for system programming), optional paging/DECT equipment, an optional printer or PC (to run Quantec's QT707S Surveyor data management software).



## Quantec Addressable Call Point with Button Reset

### QT602E

A programmable addressable call point c/w iconised label and remote jack socket for use with C-TEC's Quantec Addressable Call System. Includes a Call button, Reset button and red/green confidence light. Can make up to 5 levels of call – Standard, Ensuite, Help Required, Emergency, Presence & Attendance.



## Quantec Network Splitter

### QT603

An essential wiring/installation aid for C-TEC's Quantec Addressable Call System. Helps protect against open and short circuit faults and reduces the risk of volt drop.



## Quantec Monitoring Point with Button Reset

### QT604

A key switch-isolatable monitoring point c/w a RESET button for canceling calls. Can be configured to generate a Standard or Emergency call when a fire exit or drug cupboard is opened (via magnetic contacts) or a telephone or doorbell rings. Can be used to monitor any device with a normally open or normally closed switch – ideal for interfacing PIRs, strip switches, flow switches and other devices to Quantec.



# NON-FIRE PRODUCTS



## Quantec Slave Overdoor Light QT606

Provides visual indication of calls made from a Quantec call point outside bedrooms, WCs, etc. Flash and colour sequence changes/intensifies to reflect the urgency of the incoming call. Dual red and green LEDs and triangular diffuser make it highly visible from a distance.



## Quantec Addressable Overdoor Light with Sounder QT606A

An addressable overdoor light & sounder designed to increase call indication levels in large Quantec sites. Can be programmed to illuminate and sound when certain groups of call points are calling. Ideal for providing area indication or 'follow me' lights at the ends of corridors, etc



## Quantec Ceiling/Wall Pull Unit QT607

Can be used to generate a Standard or Ensuite call on a Quantec Addressable Call System. Ceiling or wall mountable. Typically wired as a slave to a Quantec Addressable Call Point or Quantec Accessible Toilet Reset Point. Supplied with 3m of red nylon pull cord and two red open-sided triangular bangles for ease of use by the infirm.



## Quantec Corridor Display with Controls QT608C

A 16-character x 2-line display used to indicate incoming calls in corridors, staff rooms, nursing stations, etc. Includes an onboard sounder and buttons to accept, scroll through and manually divert calls. Shows call type, call location and (depending on the device used to make the call) the User ID or name of the person calling.



## Quantec Radio Fall Sensor QT616

Activates a call on a compatible Quantec infrared or radio receiver when the person wearing it falls or if its button is pressed. 10m line-of-sight IR transmitting range. RF coverage dependent on the Quantec receiving device used. Includes a Karabiner clip and lanyard. Can be programmed to generate different call levels using a QT423 configurator.



## Quantec Programming Software with Lead QT707

PC programming tools for use with C-TEC's Quantec addressable call system. Intuitive and easy-to-use with comprehensive Help files. Requires a PC running Windows XP, Vista, 7 or 8. Kit includes a CD and a 2m long SAF7070000 programming lead (4-way molex to 9-way RS232 'D' female).



# Testing Equipment

---



# TESTING EQUIPMENT



DetectorTesters are proud to be the market leader, designing solutions that make for fast, simple and effective testing of fire detectors.



## Solo Smoke Detector Tester Spray

Solo-A5-001	250ml Flammable
Solo-A10-001	150ml Non-Flammable
Solo-A10S-001	250ml Non-Flammable

Approved all over the world, Solo smoke aerosols (used with the Solo 330/332 dispensers) deliver smoke particles to the detector under test replicating the conditions of smoke from a fire. The range of smoke aerosols has recently increased to allow continued use of our Solo 330/332 dispensers in full compliance with latest regulations.



## SmokeSabre Detector Tester

SMOKESABRE-100-001	100ml
SS-01	150ml

SmokeSabre is the fire industry's leading hand-held smoke aerosol. Its unique design prevents use too close to the detector which eliminates the risk of residue – keeping the detector safe whilst enabling fast testing and preventing re-alarms.



## Solo CO Test Aerosol

Solo-C3-001	250ml
Solo-C6-001	250ml

Designed for functional testing of detector testers, the Solo CO Aerosol ensures that detectors that respond to smoke are in full working order. Non-flammable, this product is the professional's choice for value in aerosol smoke.



## Solo 365 Urban Smoke Detector Test Kit

### URBAN365-001

The Urban 365 Kit allows safe, effective testing of smoke detectors of up to 5 metres high. Kit includes:

- 1 x Urban Backpack (inc. Pole Bag)
- 1 x Urban 4-section Telescopic Pole 1.75m
- 3 x Urban Extension Pole 0.5m
- 1 x Solo 365 Smoke Kit

## Solo Smoke Detector Tester Kit

Solo-810-001	2.5m Kit
Solo-808-001	4m Kit
Solo-809-001	6m Kit
Solo-812-001	8.2m Kit

The Solo Smoke Detector Tester kit is ideal for testing smoke detectors at heights from 2.5m up to 8.2m. Kit includes:

- Solo 330 Aerosol Dispenser
- Solo Access Pole

The Solo 812 kit also includes:

- 2 x Solo 101 Extension Pole
- Solo 200 Detector Removal Tool
- Solo 610 Storage Bag



## Solo 811 Smoke Detector Tester Kit & Head Removal

### Solo-811-001

The Solo 811 is a kit designed to aid with removal, replacement and testing of smoke detectors up to 6 metres. Kit includes:

- Solo 330 Aerosol Dispenser
- Solo 100 Access Pole
- Solo 200 Detector Removal Tool
- Solo 610 Storage Bag



## Solo 814 Smoke & Heat Mains Detector Tester Kit

### Solo-814-001

The Solo 814 is a universal set for testing and removing smoke detectors and heat detectors fitted up to 6 metres. The kit contains:

- Solo 100 Fibreglass 4 Section Telescopic Pole 4.5 metres
- Solo 200 Universal Detector Removal Tool
- Solo 330 Aerosol Smoke Dispenser
- Solo 424 220/240v Heat Detector Tester
- Solo 600 Protective Carrying / Storage Bag
- Solo A10 Aerosol 150ml non-flammable



## Solo Smoke & Cordless Heat Detector Tester Kit

### Solo-822-001 6m Kit

### Solo-823-001 9.3m Kit

The Solo Smoke & Cordless Heat Detector Tester Kit is a universal set for testing and removing smoke detectors and heat detectors fitted up to 9.3 metres. The kit contains:

- Solo 100 Fibreglass 4 Section Telescopic Pole 4.5 metres
- Solo 200 Universal Detector Removal Tool
- Solo 330 Aerosol Smoke Dispenser
- Solo 610 Protective Carrying / Storage Bag
- Solo A10 Aerosol 150ml non-flammable

The Solo 823 also includes:

- 3 x Solo 101 1.13m Fibreglass Extension Pole



## Solo Access & Extension Poles

The Solo Access Pole offers safe access to detectors installed at heights from 3 to 6 metres. The pole ensures fire alarm technicians are fully compliant with Safe Working at Height Regulations 2005. The Solo Extension Poles are to be used to extend the height of the Solo telescopic access pole.

CODE	PRODUCT DESCRIPTION	HEIGHT
Solo-101-001	Solo 101 Extension Pole	1.13m
Solo-111-001	Solo 111 Extension Pole	0.5m
Solo-108-001	Solo 108 Telescopic Access Pole	2.2m
Solo-100-001	Solo 100 Telescopic Access Pole	4.5m
Solo-110-001	Solo 110 Telescopic Access Pole	1.75m



### Solo 365 Smoke Detector Tester

**Solo-365-001**

An innovative new tester for the functional testing of smoke detectors. Solo 365 delivers smoke via Solo ES3 smoke cartridges offering faster, simpler and cleaner testing. Key features include 'Auto-start' – proximity sensor automatically initiates test, flexible head – easy testing of hard-to-access detectors, LED Auto-torch for testing in dark areas.



### Solo Aerosol Dispenser

**Solo-330-001**

**Solo-332-001**

The most widely used detector tester, the Solo 330 works with the Solo A5, Solo A10s and Solo A10 smoke detector test aerosols to deliver fast and effective functional testing of smoke detectors. The Solo 332 is ideal for detectors with a larger diameter thanks to its increased cup size.



### Solo Heat Detector Tester

**Solo-423-001** Mains

**Solo-424-001** Mains

**Solo-460-001** Cordless

**Solo-461-001** Cordless

The Solo Heat Detector Tester is a professional and robust tool for testing heat detectors fitted at heights of up to 9 metres. The range includes a battery-powered or mains-powered heat detector tester that connects to a Solo access pole allowing a maximum reach of 9 metres. The tester uses patented technology to direct a focussed beam of heat directly towards the sensor.



### Solo 200 Detector Removal Tool

**Solo-200-001**

The Solo 200 detector removal tool is designed for universal use to meet the challenge of removing and installing these different detectors. The colour-coded heads of the Solo 200 rotate to provide a combination of sizes and settings to suit the different detectors.

## Solo Bags & Backpacks

Solo-612-001	Solo 612 Urban Pole Bag
Solo-602-001	Solo 602 Pole Carrying Bag
Solo-610-001	Solo 610 Protective Carrying Bag
Solo-611-001	Solo 611 Urban Backpack - Includes Solo 612 Pole Bag

A range of purpose-built protective carrying/storage bags for the Solo testing equipment. These accessories offer a professional and practical carry/storage solution for engineers carrying out testing using the Solo test products.



## Solo Batteries & Accesories

CODE	PRODUCT DESCRIPTION
Solo-370-1PACK-001	Solo 370 Battery Pack - 1 Pack
Solo-370-4PACK-001	Solo 370 Battery Pack - 4 Pack
Solo-371-001	Solo 371 Smoke Generator
Solo-372-001	Solo 372 Adapter
SPARE-1005-001	Solo 1005 Silicone Membrane
SPARE-1002-001	Solo 1002 Pair Of Transparent Grips for Head Removal Tool
Solo-727-001	Solo 727 Battery Charger
Solo-770-001	Solo 770 Battery Batton
Solo-425-001	Solo 425 5m Extension Cable
SPARE-1028-001	Solo Spare 1028 Aerosol Retaining Cup

## Testifire Smoke/Heat Detector Tester

Testifire-1000-001 Head Unit only

Testifire-1001-001 Kit

The Testifire Detector Tester is a smoke and heat detector testing unit. This unit can test smoke detectors, heat detectors and multi-criteria smoke & heat detectors. Functional smoke testing is carried out using the Testifire 1001 head unit and a TS3 smoke capsule.



## Testifire Smoke/Heat Kit - includes 2 Battery Baton

Testifire-6001-001 6m Kit

Testifire-9001-001 9m Kit

The Testifire Smoke/Heat kit allows for functional testing and head removal of heat and smoke detectors from 6 to 9 metres. Kit includes:

- Testifire 1001
- Solo 200 Detector Removal Tool
- Solo 610 Storage Bag
- Solo 100 Access Pole

The Testifire 9001 kit also includes 3 x Solo 101 Extension Pole



# TESTING EQUIPMENT

## Testifire Smoke/Heat/CO Head Unit Detector Tester

Testifire-2000-001 Head Unit Only

Testifire-2001-001 Head Unit Kit

The Testifire 2001 offers all the features and benefits of the 1001 – but with the added ability to test CO. CO testing is carried out using a Testifire head unit and a TC3 capsule, safe levels of CO are generated via the capsule once the tester is placed over the detector.



## Testifire Smoke/Heat/CO Head Unit Kit - includes 2 Battery Baton

Testifire-6201-001 6m Kit

Testifire-9201-001 9m Kit

Designed for fire safety professionals in mind, the Testifire Smoke/Heat/CO Head Unit kit contains all the equipment you need for functional testing of smoke, heat and CO detectors of heights from 6 to 9 metres. Kit includes:

- Testifire 2001
- Solo 200 Detector Removal Tool
- Solo 610 Storage bag
- Solo 100 Access Pole

The Testifire 9201 also includes 3 x Solo 101 Extension Poles.



## Testifire Smoke & CO Capsules

CODE	PRODUCT DESCRIPTION
TS3-1PACK-001	Testifire ts3 Replacement Smoke Capsule - 1 Pack
TS3-3PACK-001	Testifire ts3 Replacement Smoke Capsule - 3 Pack
TS3-6PACK-001	Testifire ts3 Replacement Smoke Capsule - 6 Pack
TC3-3PACK-001	Testifire tc3 Replacement CO Capsule - 3 pack
TC3-6PACK-001	Testifire tc3 Replacement CO Capsule - 6 pack



## Urban Test Kit - includes 1 baton

URBAN1001-1-001 Smoke/Heat test Kit

URBAN2001-1-001 Smoke/Heat/CO Test Kit

The Urban Smoke/Heat test Kit allows safe, effective testing of smoke and heat detectors of up to 5 metres high. Kit includes:

- Urban Backpack (inc. Pole Bag)
- Urban 4-section Telescopic Pole 1.75m
- 3 x Urban Extension Pole 0.5m
- 1 x Testifire 1001 Smoke/Heat Detector Tester OR
- 1 x Testifire 2001 Smoke/Heat/CO Detector Tester



## Scorpion Point Test Head Unit & Mounting Bracket

SCORP1001-001

Scorpion test head and mounting bracket for use with point type smoke detectors. Universal design, suits all point type smoke detectors. Can be retro fitted or fitted at time of install. Ideal for lift shafts, ceiling voids, secure areas. Clearing function enables rapid reset and reduces re-alarms.



## Scorpion Smoke Detector Tester (for hard-to-access detectors)

SCORP1011-001

Permanently installed alongside a smoke detector, the SCORP 1011 is used to enable functional testing of hard-to-access smoke detectors. Universal design, suits all point type smoke detectors. Can be retro fitted or fitted at time of install. Ideal for lift shafts, ceiling voids, secure areas. Clearing function enables rapid reset and reduces re-alarms.



## Scorpion ASD System Tester

SCORP2011-001

Permanently mounted adjacent to a sampling hole on the ASD pipe run, the SCORP 2011 is used to enable functional testing of aspirating smoke detection systems. Universal design, suits all ASD systems. Can be retro fitted or fitted at time of install. Ideal for lift shafts, ceiling voids, secure areas.



## Scorpion Point/ASD Head Fixing Kit

SPARE1052-001 Point Head Kit

SPARE1053-001 ASD Head Kit

A replacement mounting bracket for use with the Scorpion 1001 or 2001 test head.



## Scorpion 25 Access Point

SCORP25-001

Specifically assigned to one Scorpion head unit (Point or ASD). Used in conjunction with Scorpion 7000.



# System Accessories

---





## Yuasa Batteries

CODE	PRODUCT DESCRIPTION
12VX1.2AH	12V 1.2ah NP Yuasa Battery
12VX2.1AH	12V 2.1Ah Yuasa Battery
12VX2.3AH	12V 2.3Ah NP Yuasa Battery
12VX3.2AH	12V 3.2Ah NP Yuasa Battery
12VX7AH	12V 7Ah NP Yuasa Battery
12VX12AH	12V 12Ah NP Yuasa Battery
12VX17AH	12V 17Ah NP Yuasa Battery
12VX18AH	12V 18Ah NP Yuasa Battery
12VX24AH	12V 24Ah NP Yuasa Battery
12VX26AH	12V 26Ah REC Yuasa Battery
6VX4AH	6V 4Ah NP Yuasa Battery



## Lithium Batteries

CR2032A	Duracell or Energizer
CR123A	Duracell

## Power Supply Units

The STX range of power supplies has been specifically designed for Fire System Installations and features intelligent battery charging and monitoring with remote fault signalling.

CODE	PRODUCT DESCRIPTION
EU/STX2405-C	24V 5 Amp Power Supply Unit
EU/STX2401-T	24V 1.2 Amp Power Supply Unit
EU/STX2405-E	24V 5 Amp Power Supply Unit
EU/STX2401-C	24V 1.2 Amp Power Supply Unit
EU/STX2402-C	24V 2 Amp Power Supply Unit



## Xtralis Power Supplies

Xtralis Power Supply Units are designed to complement the style and appearance of Xtralis' aspirating smoke detectors (ASDs) and are technically matched to provide sufficient current and battery charging capacity to meet the requirements of EN 54-4.

CODE	PRODUCT DESCRIPTION
VPS-220-E	Xtralis 0.5A Output Power Supply 24V
VPS-250-E	Xtralis 2A Output Power Supply 24V



# SYSTEM ACCESSORIES



## Xtralis OSID Supplies

Open-area Smoke Imaging Detection (OSID) by Xtralis is a new innovation in projected beam smoke detection technology. By using advanced dual wavelength projected beams and optical imaging technology for early warning smoke detection, OSID provides a cost-effective, reliable and easy-to-install solution that overcomes typical beam detection issues such as false alarm incidents and alignment difficulties.

CODE	PRODUCT DESCRIPTION
OSE-SP-01	OSID Emitter - Standard Power - Alkaline Battery
OSID-INST	OSID Installation Kit



## BS5839 Fire Alarm Panel Isolating Key Switch

### EUR/210R

The Fire Safety Isolating Key Switch provides a secure method for safety isolating the mains voltage supply to fire systems in accordance with BS 5839 Part 1 2002.



# eurotech<sup>®</sup>

## FIRE SYSTEMS LIMITED

---

[enquiry@eurotechfire.com](mailto:enquiry@eurotechfire.com)

+44 (0) 203 141 0999

[eurotechfire.com](http://eurotechfire.com)

### **Eurotech Fire Systems Limited**

18-20 Stratfield Park  
Elettra Avenue  
Waterlooville  
Hampshire  
PO7 7XN  
United Kingdom

