

CAVIUS™

THE WORLD'S
SMALLEST
ALARMS



eurotech®
FIRE SYSTEMS LIMITED

PRODUCT OVERVIEW

Kidde has extended its range to include wireless radio frequency (RF) enabled alarm solutions. The latest products further enhance Kidde's portfolio of smoke, heat and carbon monoxide (CO) alarms to offer greater flexibility and choice for residential system installations.

This new CAVIUS-branded range of smoke, heat and CO alarms are available in Kidde's fire safety portfolio to provide even more choice for residential applications.

A key highlight of the new range of alarms is the introduction of smoke and heat alarms featuring RF technology for wireless connectivity. If one smoke alarm detects fire, all alarms will activate, providing occupants with a greater chance to be alerted to the fire threat and escape, regardless of their location in the building.

The range includes the mains powered, wireless CV2208 smoke alarm featuring an outlet that can be used as a hook for pendant lights, to avoid an extra unit on the ceiling.

The line-up also includes a smart remote that alerts occupants to fire. If an alarm occurs, the smart remote will activate with a flashing warning light. The remote can also be used to test or silence other alarms installed from the collection and features a torch function to illuminate escape routes at night.



WORLD'S SMALLEST ALARMS



40mm

HEAT ALARM 10 YEAR BATTERY

CAVIUS made the World's smallest heat and smoke alarms. 40mm in diameter. Despite the micro design, the CAVIUS 40mm alarms are certified according to the highest standards worldwide. At the same time the alarms live up to the strict CAVIUS quality demands.



40mm

SMOKE ALARM 10 YEAR BATTERY

CAVIUS alarms are also tested and approved for Recreational Vehicles (RV) And can be used together with the CAVIUS "Build in base".



40mm

CO ALARM 10 YEAR BATTERY

Based on its strong experience with photoelectric smoke alarms, CAVIUS made the World's smallest CO alarm.

Also designed in a 40mm micro design, it will protect you against the "silent killer".

The CAVIUS CO alarm, is made with the highest quality standards components, certified EN50291 and is featuring an ultra-long 10 year lifetime.

Like the CAVIUS Smoke alarms, the CO alarm is also approved for Recreational Vehicles (RV) And can be used together with the CAVIUS "Build in base".

WIRELESS ALARM FAMILY

65 MM SMOKE ALARM 5YEAR BATTERY



78 MM SMOKE ALARM 10YEAR BATTERY



97 MM MAINS POWERED SMOKE ALARM



WIRELESS 
ALARM FAMILY

65 MM HEAT ALARM 5YEAR BATTERY



78 MM MAINS POWERED HEAT ALARM



**ONE ALARM
TRIGGERS ALL**



140 MM SMART REMOTE



60 MM FLOOD/WATER LEAK ALARM 5YEAR BATTERY



Danish Design



5 and 10 Years Battery



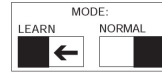
100% Tested



Environmentally friendly

WIRELESS ALARM FAMILY

CAVIUS invented the most simple way to link the Wireless Alarm Family. Slide all devices into LEARN mode and press the TEST button on any device until you hear a BEEP. All Alarms will then start flashing, to verify the communication between the alarms. Then slide back into NORMAL mode. The Alarms are now ready to be sited. This is CAVIUS simplicity.



All devices, no matter what feature, has the exact same switch in order to avoid any misunderstandings.

RF RELAY INTERFACE

Enables a connection between an external system or between devices and the CAVIUS wireless family.

Designed to connect external devices in a property such as telecare / warden control call systems, sprinkler systems, fire panels, strobes, and external sounders, etc. This can enable essential and lifesaving connections to be made and provide protection and safety to vulnerable occupants when faced with a fire hazard in the property.

When a fire event is detected in a property, the relay interface unit allows connected external devices to be activated.



MAINS POWERED SMOKE ALARM

CAVIUS Mains Powered Smoke Alarm can work as a lamp outlet or lamp hook, to avoid an extra spot on the ceiling. The alarm is designed with a built-in slot for vacuuming and testing the smoke chamber from distance.

WIRELESS ALARM FAMILY

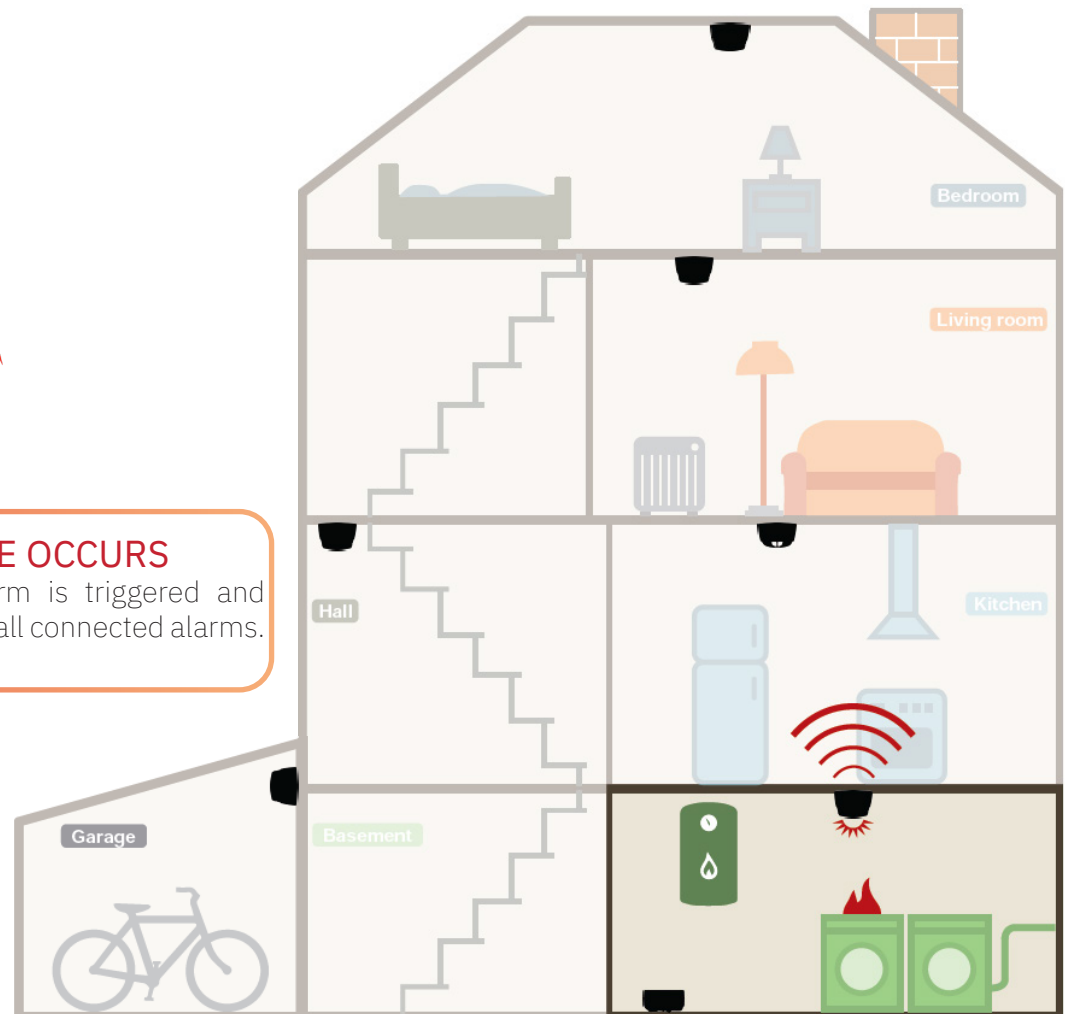
CAVIUS CREATED AN AFFORDABLE ALARM FAMILY OUT OF THE ORDINARY

CAVIUS has created an integrated Wireless Alarm Family range with a common protocol.

All alarms will alert you whether there is a flood/water leak in the basement, a fire in the attic or smoke in the hallway. The detector causing the alarm, will be easy to identify due to the clear visible indication.



1 WHEN A FIRE OCCURS
the nearest alarm is triggered and
sends signals to all connected alarms.



WIRELESS ALARM FAMILY

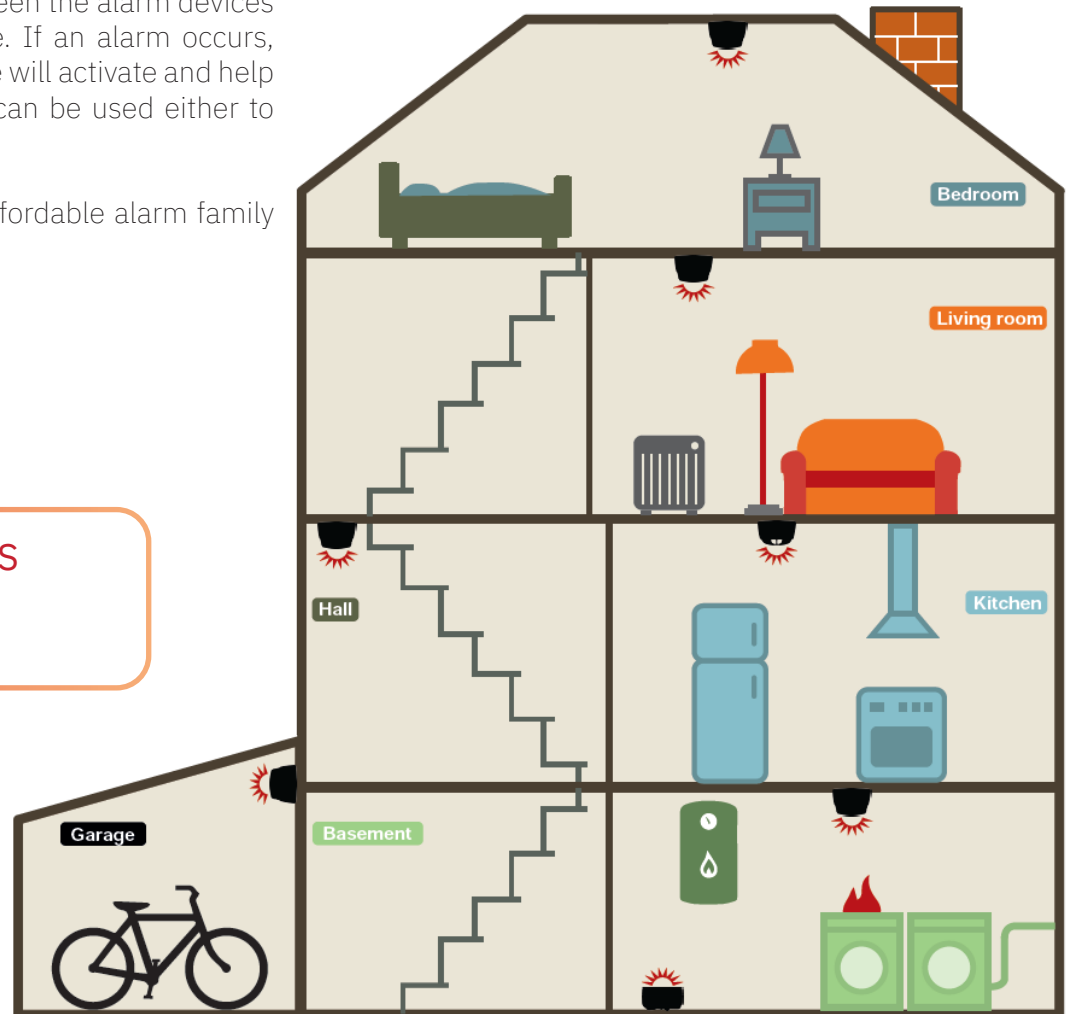
ONE ALARM TRIGGERS ALL

So far communication between wireless battery operated alarms and mains powered alarms, has not appeared in the market.

The CAVIUS Mains Powered smoke alarm can communicate with any other CAVIUS wireless battery operated alarm. Alongside this new way of thinking, CAVIUS has also created the Smart Remote for the range. The communication between the alarm devices and the remote is unique. If an alarm occurs, the CAVIUS Smart Remote will activate and help you escape. The remote can be used either to test or silence the alarms.

CAVIUS has created an affordable alarm family to the modern home.

2 ALL ALARMS are triggered.



BUILD IN SOLUTION



40mm
HEAT ALARM



40mm
SMOKE ALARM



40mm
CO ALARM

The new top button on the 40 mm product line, allows you to build in the CAVIUS “stand alone” models. And will make your CAVIUS alarm even more unnoticed. Designed with standard CAVIUS snap features, it will substitute original mounting base and allow you to hide much of your alarm into the ceiling.

The World’s smallest, just got smaller.



BUILD IN SOLUTION



65mm
SMOKE ALARM



65mm
HEAT ALARM



78mm
SMOKE ALARM

The CAVIUS “Build in” base also went through certification for the Wireless Alarm Family. It is now possible to hide away most of your alarm without compromising on safety.

The first “build in” base, to pass the Fireroom test.



TYPES OF ALARMS

Smoke, heat, flood or CO – with the CAVIUS alarm family you are able to protect your entire home from fire. Alarms installed in the home saves lives. More than half of house fire deaths occur in homes with no working smoke alarms.

Fire Safety Tips:

If a fire occurs in your home:

GET OUT, STAY OUT and CALL for help.

Install alarms on every level of your home.

The alarm should be vacuum cleaned and tested once per month.

Talk with all household members about a fire escape plan and practice the plan twice a year.

Each CAVIUS product goes individually through a 100% final test. CAVIUS always strive to have the smallest design without compromising on quality or aesthetics. Danish design & development.

SMOKE ALARM

It is recommended to place at least one smoke alarm on every floor of the home - especially in hallways and bedrooms. Do not place a smoke alarm too close to a kitchen appliance or fireplace, as this may result in false alarm.

HEAT ALARM

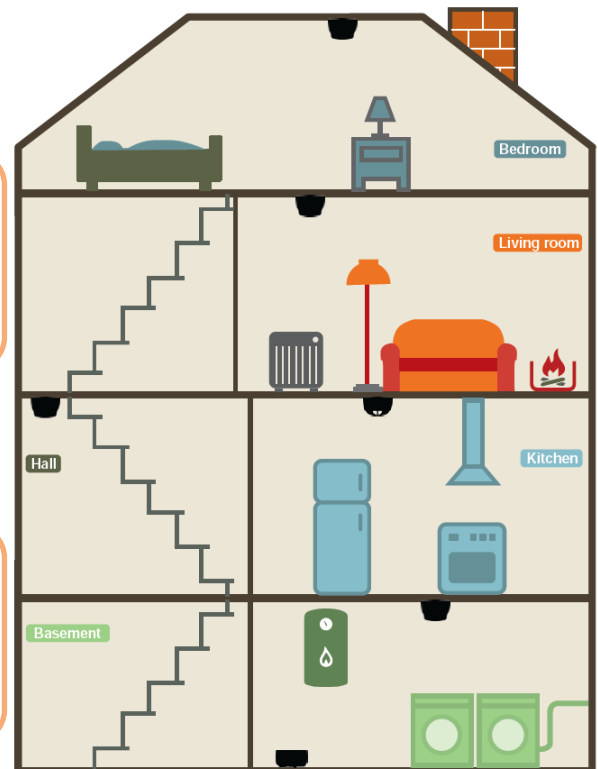
Heat alarms are designed to avoid false alarms. It is used in areas where smoke can be accepted, such as kitchens, garages, fireplaces and workshops. This device is activated when it senses a rapid increase in room temperature.

CO ALARM

CO alarms are placed in rooms with burners and near sleeping areas - in the level where you breathe - and on each floor. Can be placed on walls or ceilings, but not right next to or over a fireplace or flame-producing appliance.

FLOOD ALARM

Flood alarms are designed to detect a leak of water from washing machines, dishwashing machines, broken pipes or humid areas. Can also detect flooding of basements etc.



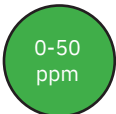
POSSIBLE CO SOURCES

Carbon monoxide (CO) is a poisonous, colorless, odorless and tasteless gas. Although it has no detectable odor, CO is often mixed with other gases that do have an odor.

So, you can inhale carbon monoxide right along with gases that you can smell and not even know that CO is present.

- Open fireplace and clogged chimney
- Incorrectly serviced gas stove
- Defect or incorrectly ventilated gas boiler
- Running vehicle engine in the garage

Cavius CO-alarm alerts you according to the following levels (PPM=parts per million):



0-50
ppm

Safe.



50-100
ppm

Cavius CO alarm
starts after 60-90
minutes.



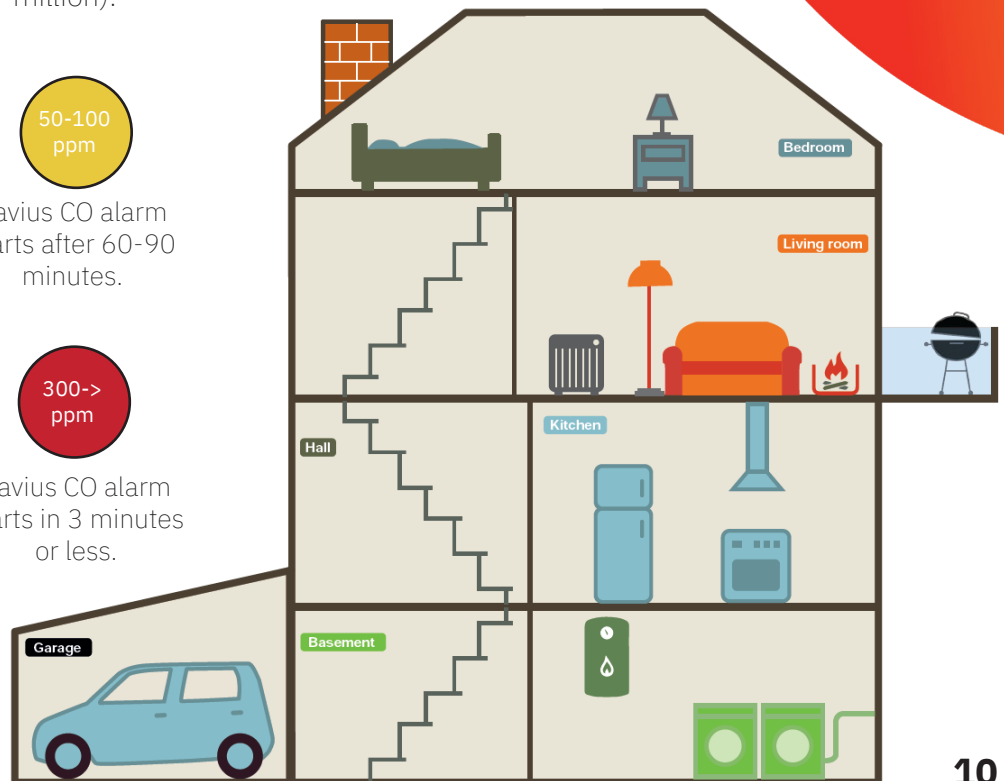
100-300
ppm

Cavius CO alarm
starts after 10-40
minutes.



300->
ppm

Cavius CO alarm
starts in 3 minutes
or less.



CAVIUS ALARMS - ADVANTAGES

CORE TECHNOLOGY:

The core technology of the CAVIUS 40mm smoke alarms was designed by a team experienced in developing high quality system smoke detectors to EN54-7. There are often many hundred detectors on a system, and single false alarm can cause evacuation of hotels, hospitals, shopping centres etc. They also have to be highly reliable in detecting fires. There is also direct involvement with forming and revising EN system and smoke alarm standards.

DESIGN:

The alarm design with the stacking of all the components: Battery, electronics, chamber and sounder in order to make the overall design as small as possible were a first on the market and revolutionized the smoke alarm industry. CAVIUS alarms are using the highest quality components to ensure quality, reliability in performances, stability and to ensure products will be 100% operational during their lifetime of 10Y.

CHAMBER SIZE:

The effective size of the smoke sensing chamber is much smaller than previous 'standard' designs. To maintain a good quality performance this requires additional cost in the optical components, amplifiers for the photodiode and a good quality micro controller to carry out signal processing.

PERFORMANCE:

The performance of a smoke sensor is dependent on a good smoke entry in all orientations around the alarm. It also must have a very good resistance to false alarms due to point sources of contamination, insects, and humidity. This is not the case with most other larger smoke alarm sensor designs. Due to these characteristics, CAVIUS smoke alarms are certified for recreational vehicles where the exposure to different humidity and change in temperature is high.

SOFTWARE:

The software in the CAVIUS smoke alarms includes a fire detection algorithm with features similar to that found in expensive analogue detection systems. This includes correction for drift due to the build-up of contamination, rejection of spurious signals, temperature compensation and averaging of the signal levels. These features give a superior performance to the simple alarm thresholds used in standard smoke alarm ICs. The software also includes a calibration routine, which stores a gain factor in flash memory. This is more accurate than the variable resistor set by hand on most other alarms, and much more reliable long term. The software also includes features for self-test, hush mode after alarm, and battery test.

MANUFACTURING:

CAVIUS alarms are testing 100% of the production in a smoke tunnel to ensure the right calibration, and every single piece is checked in an anechoic room for sound output test. Samples from each production week are sent to an accredited lab, and we are always having an inspection before shipment by an external audit company. Factory is audited several times per year (NF, VdS, ISO, Customers...)

eurotechfire.com

AND STATE OF THE ART PRODUCTION

Making security products, requires high quality as well as a reliable and rigorous QC (Quality Control) process. CAVIUS products goes through a 100% outgoing test schedule, as well as being tested by notified certification bodies and testing laboratories. The products complies with the highest safety standards in Europe, US and Australia.

Our state of the art production facilities helps us ensure the desired CAVIUS quality. We use the best equipment, the best engineers and the best materials.

All products are developed in corporation with *AW Technology.

At CAVIUS, we never compromise, and we never fail to meet and exceed your expectations.



eurotech[®]

FIRE SYSTEMS LIMITED

enquiry@eurotechfire.com

+44 (0) 203 141 0999

eurotechfire.com

Eurotech Fire Systems Limited

18-20 Stratfield Park
Elettra Avenue
Waterlooville
Hampshire
PO7 7XN
United Kingdom



Fire Industry Association
Leading Excellence in Fire Since 1916



Assessed to ISO 9001
Cert/LPCB ref. 1213

